

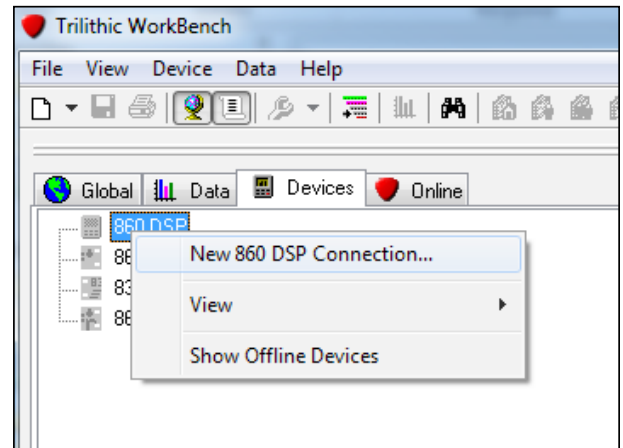
Installing the ViewPoint Link into an 860 DSPi Using WorkBench

Introduction

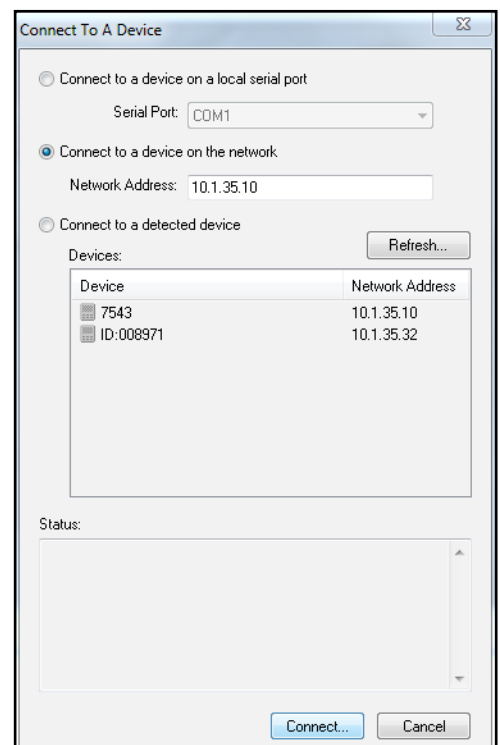
This document will describe the procedure for manually installing the ViewPoint server link into an 860 DSPi using the WorkBench software.

Connecting to the Meter

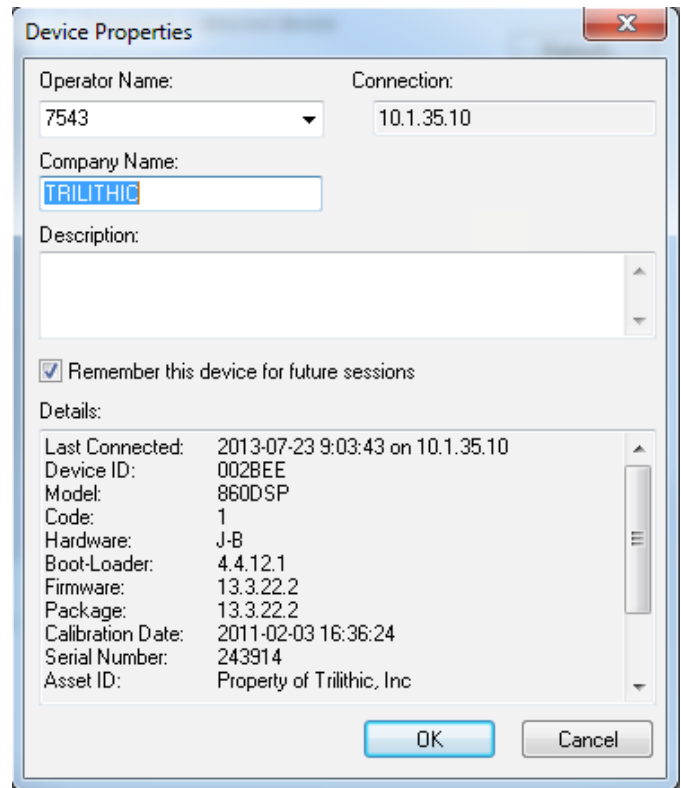
Launch the WorkBench software. Select the **Devices** tab and right-click on **860 DSP**. In the pop-up menu, select **New 860 DSP Connection**.



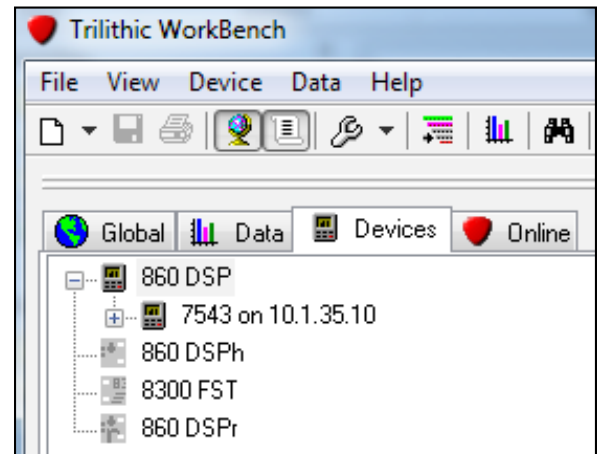
In the window that appears, select your method of connection and select the **Connect** button.



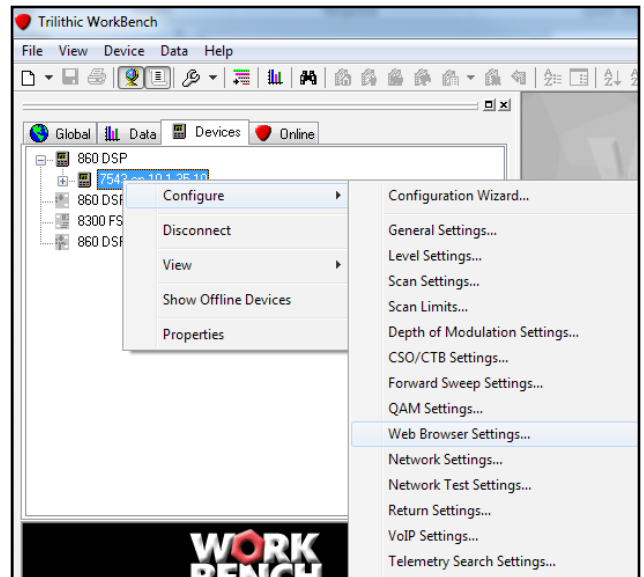
On the **Device Properties** screen, select the **OK** button.



The meter should now appear on the **Devices** tab, including the IP address.



Right-click on your meter, and select **Configure** from the pop-up menu, then **Web Browser Settings**.



On the **Web Browser Parameters** screen, select any link (other than Home Page), and rename it to **ViewPoint**.

Select the corresponding **Link Address** field and change it to:

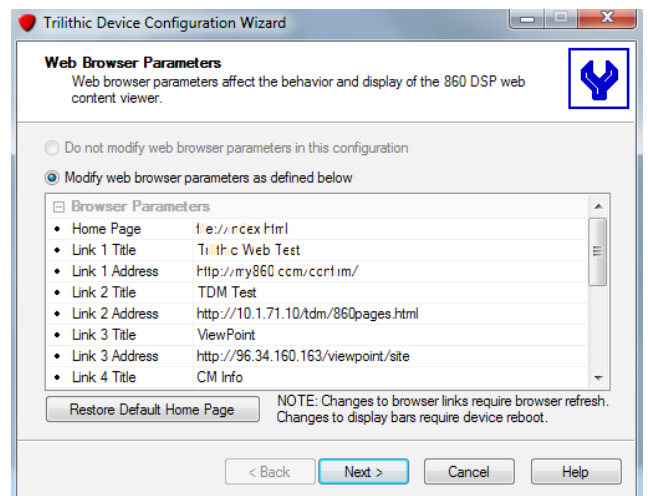
http://(serverIP)/viewpoint/site

For example, if the server IP is 10.10.1.10, the address in the 860 would be:

http://10.10.1.10/viewpoint/site

If the server is configured for SSL, the web address would begin with **https://** rather than **http://**.

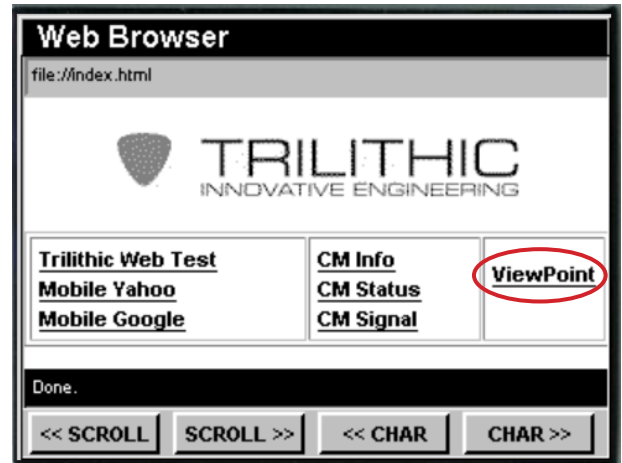
Select the **Next** button and then **Finish** to complete the installation of the link.



Do not change the Home Page link in the Web Browser Properties. It should remain as File:///index.html.

NOTE

When you refresh the web browser on the 860 DSPi, you should now see the ViewPoint link listed in your favorites.



For Additional Help, Contact Trilithic Applications Engineering
1-800-344-2412 or 317-895-3600
support@trilithic.com or www.trilithic.com