



TRILITHIC

RF & MICROWAVE

LC Miniature Filters

- 4MHz to 4.5GHz
- Small packages including surface mount styles
- 2-12 sections
- Up to 90dB of ultimate attenuation
- Input power from 1 to 100 Watts
- Environmental compliance testing available
- Small quantity to large scale production capabilities
- Designs for your specific application available



Cavity Filters

- Frequency ranges up to 18GHz
- Dielectric resonator products for WCDMA, UMTS, PCS, Public safety band and satellite radio applications
- Power levels up to 1kW
- High "Q" low-loss custom combline cavity filters
- Designs that exceed IP65 requirements



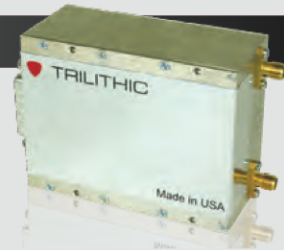
Tunable Filters

- Tunable frequency ranges from 25MHz to 4GHz with individual models covering up to an octave
- Low insertion loss
- Bandpass and Bandreject configurations
- Delivery: Stock to 4 weeks
- Custom designs are available



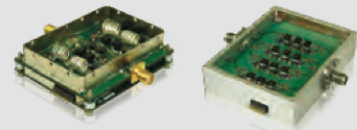
VTF Frequency Hopping Filters

- Several octave bands available, including 225 to 400 MHz
- Fast tuning speed
- High IP3 performance
- Drop-in replacement for existing system designs
- Custom designs available



PTF Tunable Filters

- Multi-Octave capability
- Multiple frequency ranges available
- Continuously tunable over the entire frequency range
- Fast tuning speed
- High IP3 performance
- Multiple mounting and connector configurations available
- Excellent environmental capabilities



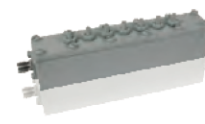
Filter Applications



SURFACE MOUNT FILTERS



PC MOUNT FILTERS



COMBLINE CAVITY FILTERS

Primary Applications

Applications	Surface Mount Filters	PC Mount Filters	Compline Cavity Filters
	Ground-based radar Airborne radar systems Airborne vehicle systems Wing systems Satellites Radio receivers	Ground-based radar Airborne radar systems Airborne vehicle systems Wing systems Satellites Radio Receivers	Ground-based radar Radio receivers Radio transmitters Base stations

Electrical Specifications

Electrical Specifications	Surface Mount Filters	PC Mount Filters	Compline Cavity Filters
Frequency Range	5 to 4000 MHz	0.1 to 4000 MHz	300 to 20000 MHz
Percentage Bandwidth	1% to 100%	1% to 100%	0.5% to 60%
Return Loss	15 dB typical	15 dB typical	15 dB typical
Power	1 Watt standard	1 Watt standard	10 Watt standard
Filter Types	Bandpass Bandreject Pseudo-elliptic Highpass Lowpass	Bandpass Bandreject Pseudo-elliptic Highpass Lowpass	Bandpass Cross-coupled bandpass Bandreject
Typical Filter Responses	Chebyshev Butterworth Bessel Gaussian Linear Phase	Chebyshev Butterworth Bessel Gaussian Linear Phase	Chebyshev Butterworth Bessel Gaussian Linear Phase
Topologies	Single Multiplexer Custom Configurations	Single Multiplexer Custom Configurations	Compline Multiplexer Custom Configurations

Electrical Specifications

Electrical Specifications	Surface Mount Filters	PC Mount Filters	Compline Cavity Filters
Operating Temperature Range	0 to 70 °C typical	0 to 70 °C typical	0 to 70 °C typical
Non-Operating Temperature Range	-55 to +85 °C	-55 to +85 °C	-55 to +125 °C
Humidity	0 to 95%, non-condensing	0 to 95%, non-condensing	0 to 95%, non-condensing
Vibration	up to 50 G	up to 50 G	up to 50 G
Shock	up to 50 G	up to 50 G	up to 50 G
Altitude	Unlimited	Unlimited	Unlimited