



Ingress ManagR 3.2

Addendum

For Users of Ingress ManagR 3.2
with SST-9581 R4 w/ECM Hubs

Ingress ManagR 3.2 Addendum

For Users of Ingress ManagR 3.2 with SST-9581 R4 w/ECM Hubs

Ingress ManagR 3.2 can be successfully used with systems consisting of only SST-9581 R4 w/ECM hubs, and with systems having a mix of ECM and older type communication managers. *See Figure 1.* However, there are several differences in hub definition steps and available features when communicating with an ECM, as compared to communicating with an NCM as described in the manual. The major difference is that an ECM is configured with the SST Configure software program for Windows, rather than Ingress ManagR and the NCM Setup software program used to configure an NCM. (The SST Configure program is necessary to support the additional functionality of the SST-9581 R4 along with the next generation of Trilithic ingress management software.) This document describes the differences in setup and communication features of Ingress ManagR when supporting an ECM hub.

To aid in understanding the descriptions of these differences, remember that Ingress ManagR has two basic modes of automatic ingress data processing: Poll and Ping modes. Poll mode is where Ingress ManagR requests a current node ingress snapshot from a communications manager (ACM-8, NCM-4, ECM), then compares it against (Ingress ManagR's) alarm threshold curves, and optionally saves ingress and alarm data to a database for analysis and/or generates SNMP alarm traps. Ping mode is where a communications manager continuously monitors node signals against its defined alarm threshold curves and maintains node alarm status, only reporting alarm status when requested by Ingress ManagR which optionally saves alarm data to a database for analysis and/or generates SNMP alarm traps. These activities take place according to the schedule programmed in the scan strategy executing in Ingress ManagR's Status Monitor. Generally, all control parameters specific to Ping mode operation are now defined by SST Configure – including alarm threshold curves in the ECM. Ingress ManagR settings related to Ping mode have been disabled to avoid the confusion and malfunction that could result from having two software programs controlling the same parameters.

Following is a discussion of setup and operation functions that differ from what is described in the user manual. The information is arranged according to the outline below.

- System Identification
 - Identifier Tab (Hub/SST/Node names)
 - Communication Tab
 - Alarm Levels Tab
 - Scan Settings Tab
 - SNMP Traps Tab
 - Configure Tab
- Status Monitor (Scan Strategy execution)
 - Poll mode
 - Ping mode
 - Configure Hub command in Scan Strategy
- Live Monitor
 - Ingress and Detector modes

System Identification

Identifier Tab

The SST-9581 R4 ECM currently supports sixteen nodes. Ingress ManagR represents this as two 8-node SSTs, SST#1 and SST#2. SST#3 thru #8 should be named “Unused”. *See Figure 2.*

NOTE: The Hub Name and Node Names specified in Ingress ManagR are NOT necessarily the same as those specified in SST Configure. Beside the use of names for logical layout and familiarity purposes, they are also used as identifiers in SNMP traps. It is advisable to keep names consistent to avoid confusion, but it is not a requirement.

Communication Tab

The Connection Method should be PC to ECM. The IP Address entered must include the Port (the ECM’s Port is 24005, e.g.: “10.11.12.13:24005”). The Hub Password should be set to the desired ECM Profile name from the profile set declared in the SST Configure software program. Max Frequency will be set to 65 MHz, and the control disabled. *See Figure 3.*

Alarm Levels Tab

The ECM’s alarm threshold curves are set up and viewed by SST Configure rather than Ingress ManagR. When communicating with an ECM, the alarm threshold curves defined in Ingress ManagR only apply to Poll mode. Ping Hits to Alarm parameter is disabled.

Scan Settings Tab

Controls for Ping mode operation parameters are disabled since they are now defined by SST Configure. The Poll mode Ingress Mode control is also disabled. With an SST-9581 R4 w/ECM, the ingress mode is fixed (set by SST Configure per field piece support requirements), but can supply ingress data in any detector mode (peak, average, or traffic) without the need for the mode to be changed by a “master” user. *See Figure 4.*

SNMP Tab

There are no changes to the SNMP tab. However, it should be noted that an ECM can be configured (by SST Configure) to send SNMP traps independent of Ingress ManagR SNMP trap control logic. Take care to avoid duplication/confusion of SNMP traps.

Configure Tab

The Configure Hub command does not transfer alarm threshold curves, traffic threshold curves, and other control parameters now defined using SST Configure to an ECM, therefore the command button is disabled. Also, ECM Date and Time are no longer set by Ingress ManagR; the Set Date/Time (“ACM-8” icon) command button is disabled and hidden. The ReadHub command retrieves ECM hub configuration data pertinent to Ingress ManagR, displaying it in a format consistent with configuration reports for other hub types in a mixed system. *See Figure 5.*

Status Monitor (Scan Strategy execution)

Poll mode

Data for all three detector modes are always available from an ECM, therefore, the concept of a “master” user (Hub Password, NCM User Password, ECM Profile name) authorized to change modes is unnecessary and not supported. Ingress ManagR will always be able to fetch ingress data for the detector mode selected for Poll mode, for any ECM profile.

Ping mode

It is important to remember that the alarm threshold curves displayed when Ingress ManagR displays an ingress alarm trace downloaded from an ECM are the threshold curves defined in Ingress ManagR and are not necessarily equal to those in the ECM which were used to trigger the alarm. The alarm triggering capability of an ECM is greater and more flexible than that of an NCM. However, it is not difficult to configure the ECM threshold curves and triggering specifications in a way that can be matched in Ingress ManagR. Especially in systems with a mix of SST-9581 R4 units and previous SST versions, or when alarm data are being recorded to a database by Ingress ManagR, it is recommended that the curves match to avoid confusion.

Configure Hub command in Scan Strategy

Since the ECM is not configurable by Ingress ManagR (only by SST Configure), the Configure Hub scan strategy command is meaningless for a hub with an ECM. If an unintentional Configure Hub command for an ECM hub is encountered in a scan strategy, it is ignored.

Live Monitor

Ingress and Detector modes

The ingress mode of an ECM is fixed at system configuration time, therefore, the Mode command button will only toggle between viewing ingress (in the ECM’s ingress mode) and viewing sweep. The update rate/resolution bandwidth corresponding to the fixed ECM ingress mode is always displayed; the Rate/RBW command is disabled. Selecting the Detector command button will toggle through all three detector modes regardless of the ECM’s ingress mode; an ECM makes data for all three detector modes available at any time in any ingress mode.

Figure1. Configurations Illustrating SST-9581 R4 w/ECM Interfacing

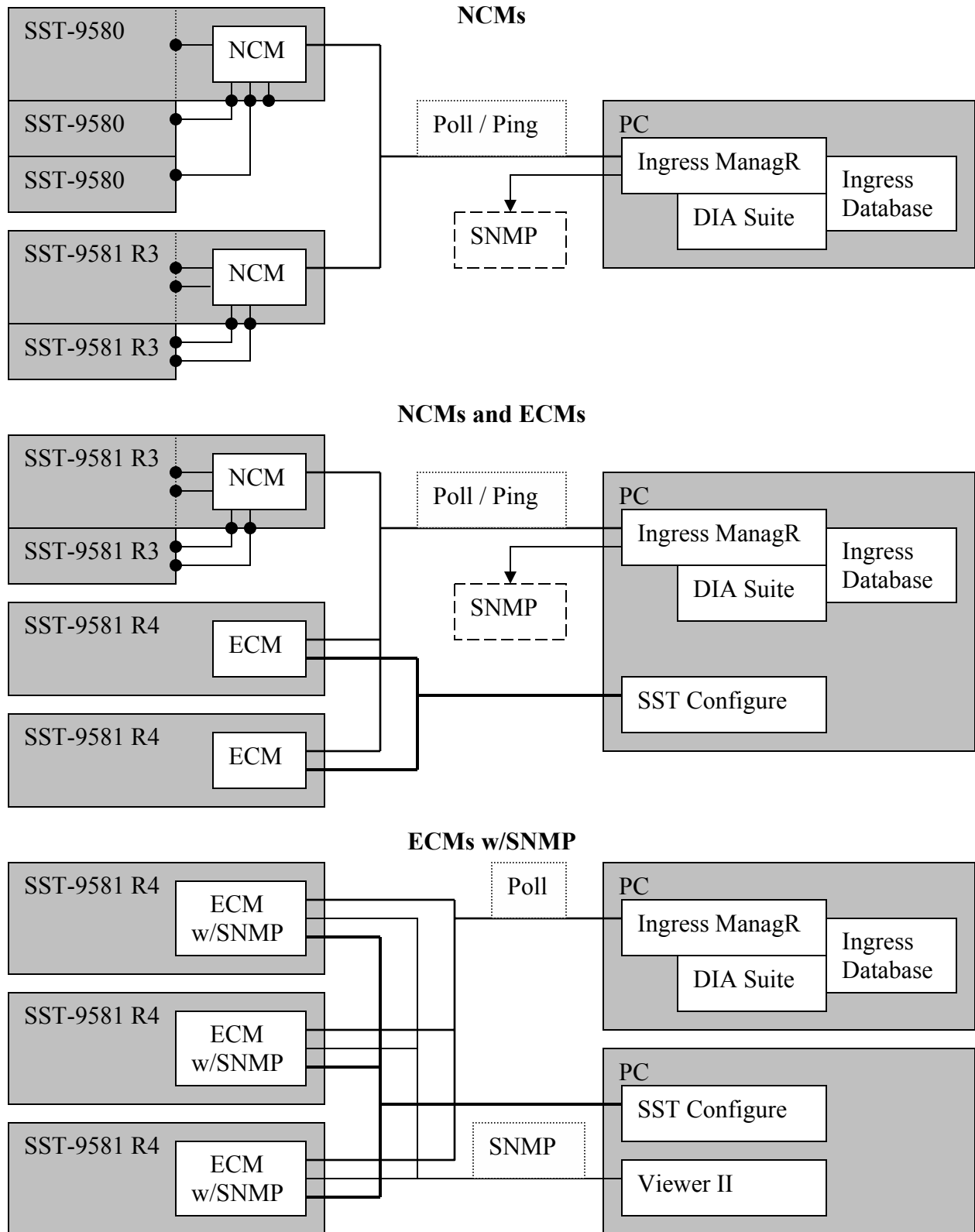


Figure 2. Identifier Tab

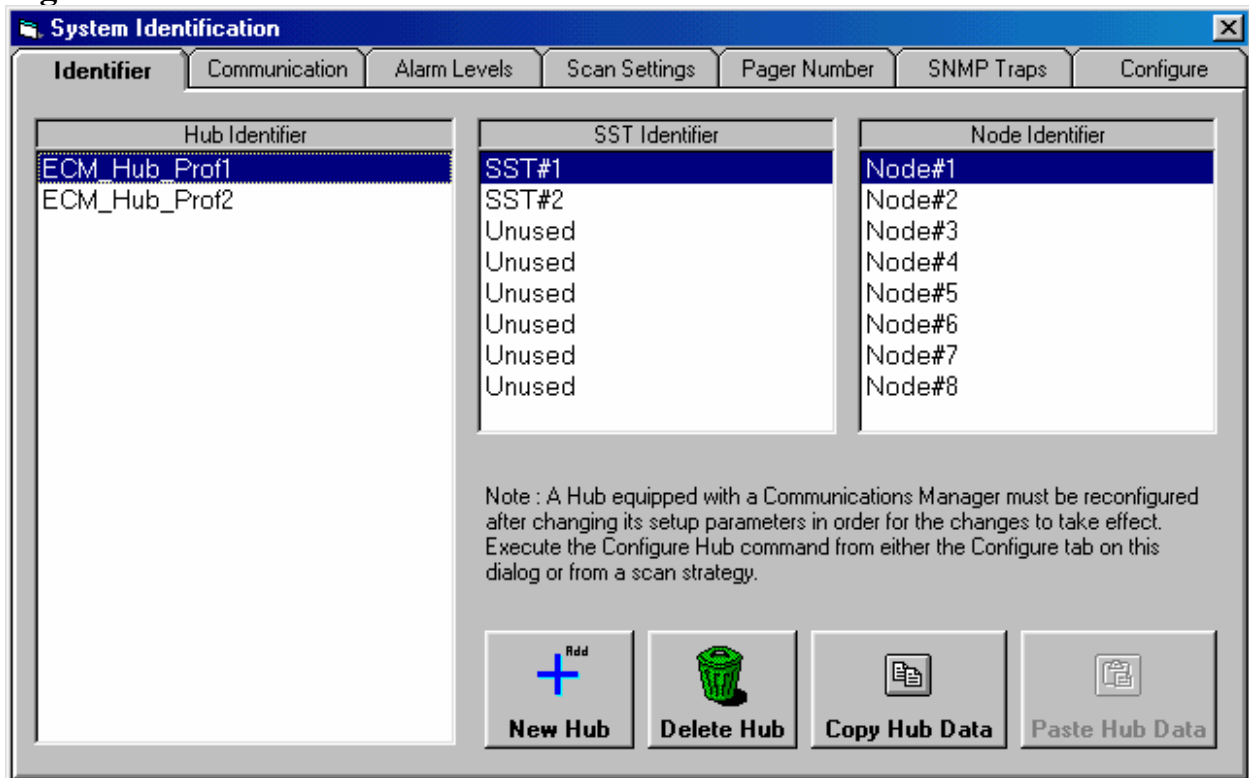


Figure 3. Communication Tab

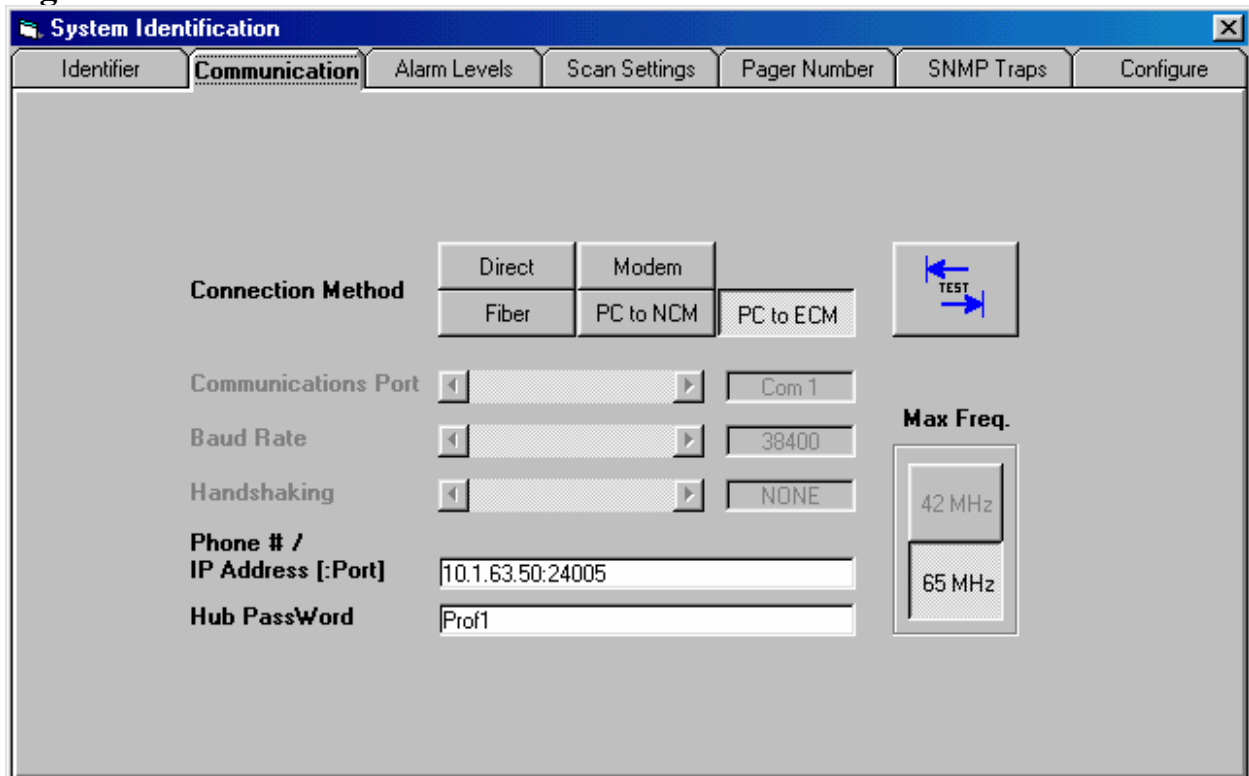


Figure 4. Scan Settings Tab

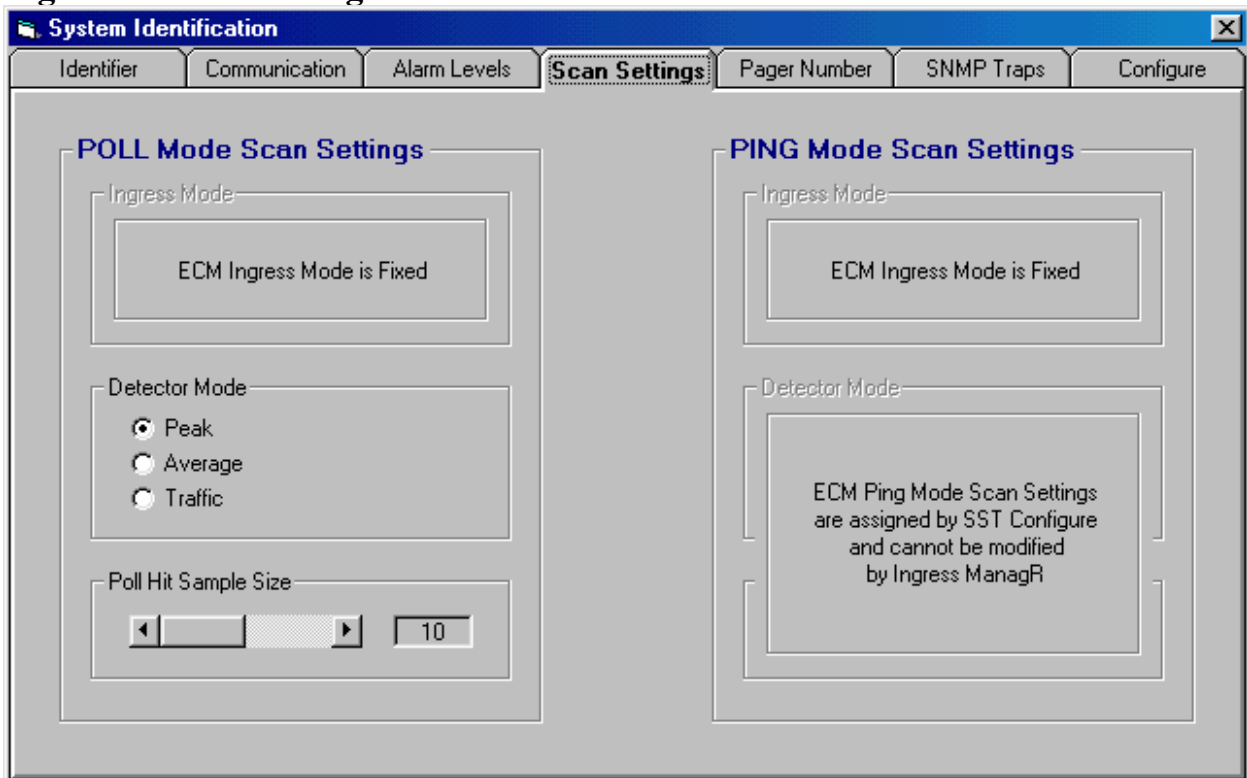
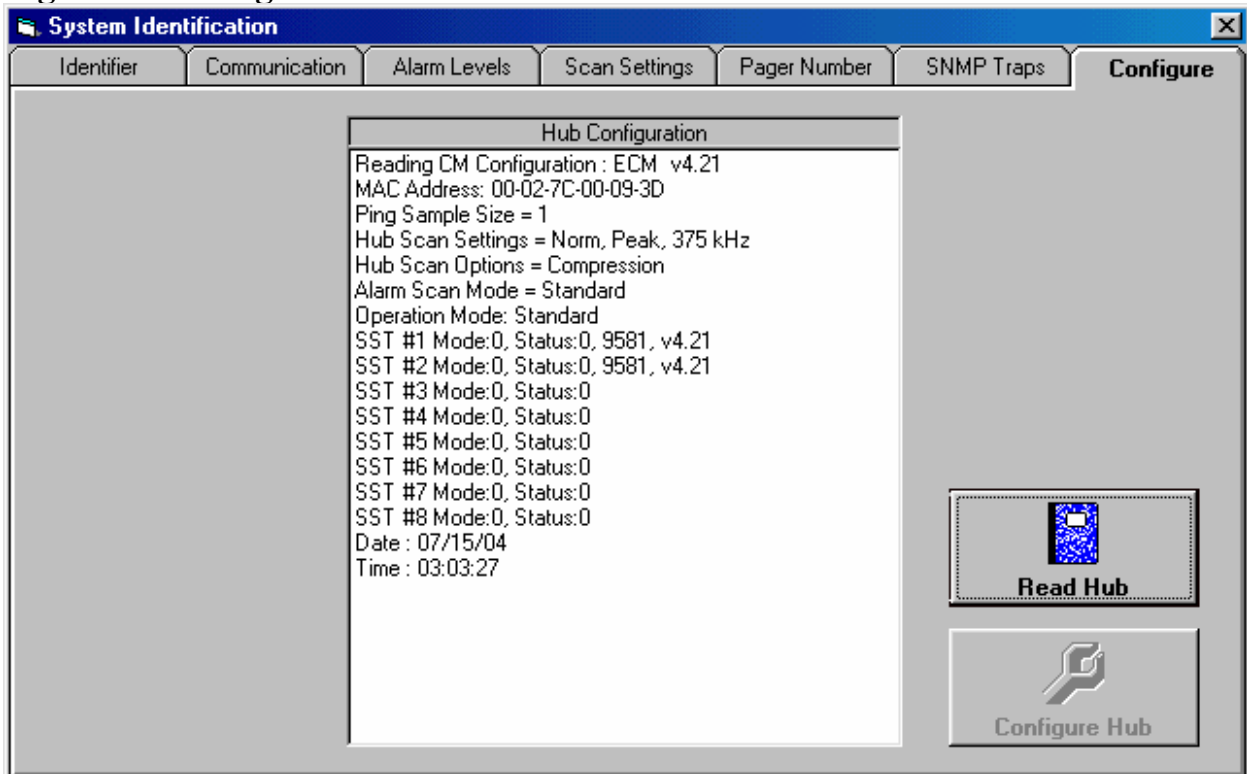


Figure 5. Configure Tab





9710 Park Davis Drive
Indianapolis, IN 46236