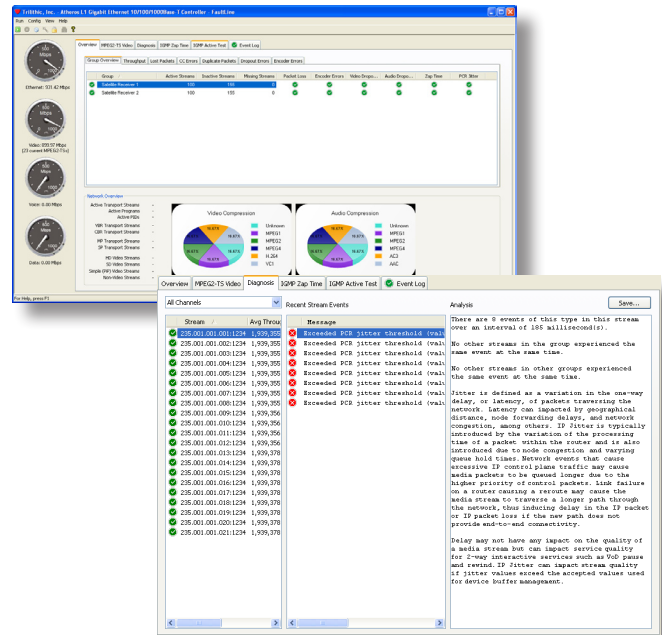


FaultLine

MPEG Analysis Suite

- 24/7 Monitoring From Your PC
- IPTV QoE/QoS Metrics
- Simultaneous Analysis of up to 1024 Video Streams
- Identify Intermittent or Hard-to-Find Transport Stream Problems
- Unmanned Data Capture for Follow-Up Performance Analysis
- Automated Channel Monitoring Configuration
- Diagnosis and Analysis of Transport Stream Problems
- At-a-Glance Network Monitoring



The FaultLine™ MPEG Analysis Suite helps technicians identify problems with compressed video streams in cable, satellite, and other video delivery networks. FaultLine is a simple, turnkey solution featuring an embedded dashboard that provides MPEG-2 transport stream monitoring in a variety of video formats. Simply set up user-defined alert and notification options and the software will send an e-mail or text message whenever a service disruption meets the specified criteria.

Simplified Video Stream Monitoring

The easy-to-read screen displays the most important indicators of video quality and experience with easy-to-understand graphics. With this MPEG analysis solution, the headend and NOC can quickly and easily determine the health of their video stream and identify the source of problems. QoE and QoS metrics such as CC errors, encoder errors, latency, video and

audio dropouts, and PCR jitter – all of which affect subscribers' video quality – are all easily monitored.

Powerful Analysis Capability

FaultLine supports MPEG-1, MPEG-2, H.264, and MPEG-4 part 2 video formats. The program can handle simultaneous analysis of up to 1024 video streams over a 1 GB Ethernet, with a capacity of over 200 channels of multicast traffic and set-top box emulation and analysis.

Isolate Hard-to-Find Problems

FaultLine allows you to quickly identify and isolate the source of problems that affect subscriber quality of service.

- Encoder dropped packets
- Network dropped packets
- Latency and jitter
- Lip-sync and synchronization issues
- Zap-time (channel change delay)

Record Video Data for Post-Analysis

Transport stream statistics can be recorded to a file and played back with a visual representation of the errors within the transport stream. This feature allows for automated data capture – especially when it may not always be convenient for the technician to be at the headend – and for quick viewing of the transport stream errors.

Optional Extended Software Support

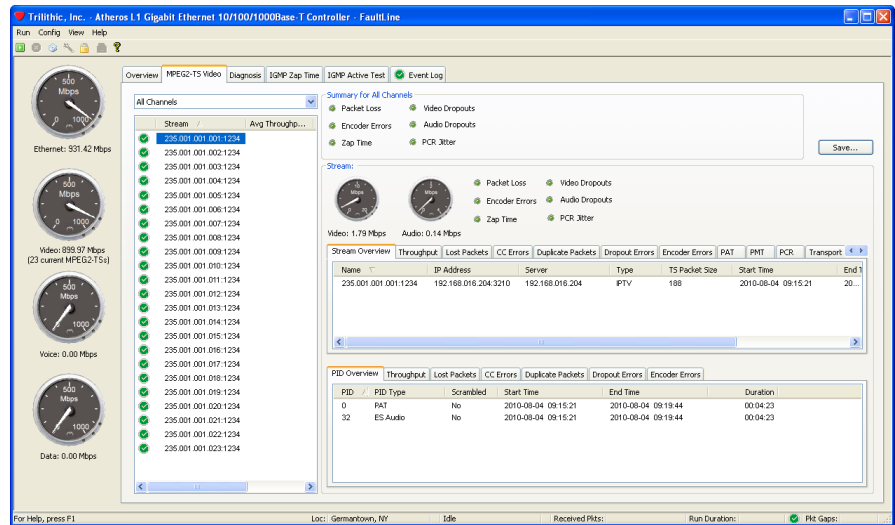
Trilithic offers an optional Software Support Agreement to provide continued service and efficiency improvements for FaultLine users. The FaultLine Software Support Agreement provides updates and enhancements for two years after purchase, as well as telephone and online technical support from Trilithic's Applications Engineering group to help you utilize FaultLine to its fullest extent.

FaultLine

MPEG Analysis Suite

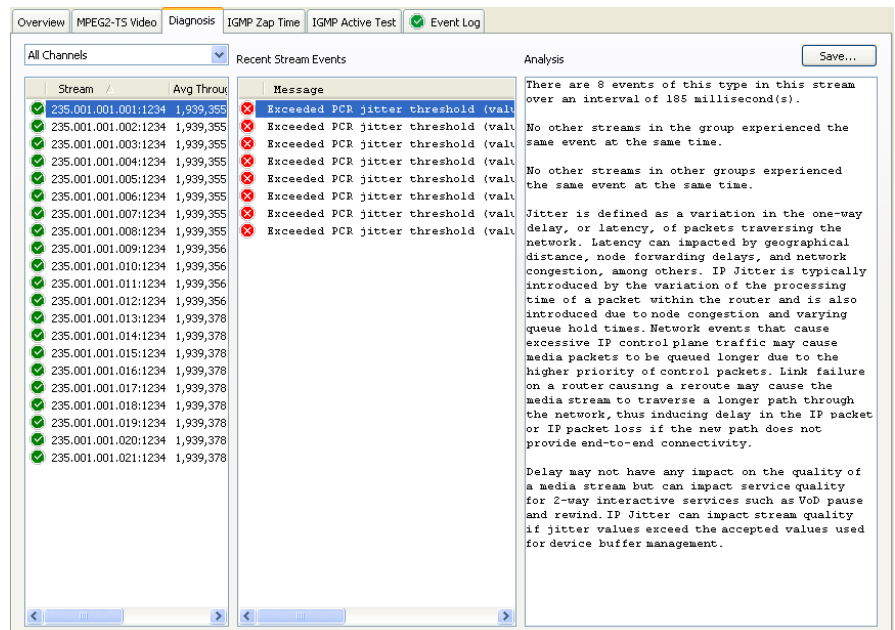
Intuitive Dashboard Display

FaultLine has a user-friendly interface that allows the technician to quickly determine stream health through red/green indicators which monitor key QoE/QoS metrics. With Channel Group, MPEG2-TS Video Stream, and Event Log dashboard views – coupled with automatic discovery of all multicast IPTV and unicast VoD streams – you can see at a glance how logically-related channels are performing as a group. Channels can be associated with each other via user-configurable channel grouping settings.



Automatic Analysis and Diagnosis of Video Stream Problems

FaultLine takes the guesswork out of analyzing transport stream problems by diagnosing transport stream problems and offering an analysis of the most likely cause of the problem. This diagnosis cuts the mean time to repair (MTTR), as the diagnosis can point directly to the problem, saving time in troubleshooting.

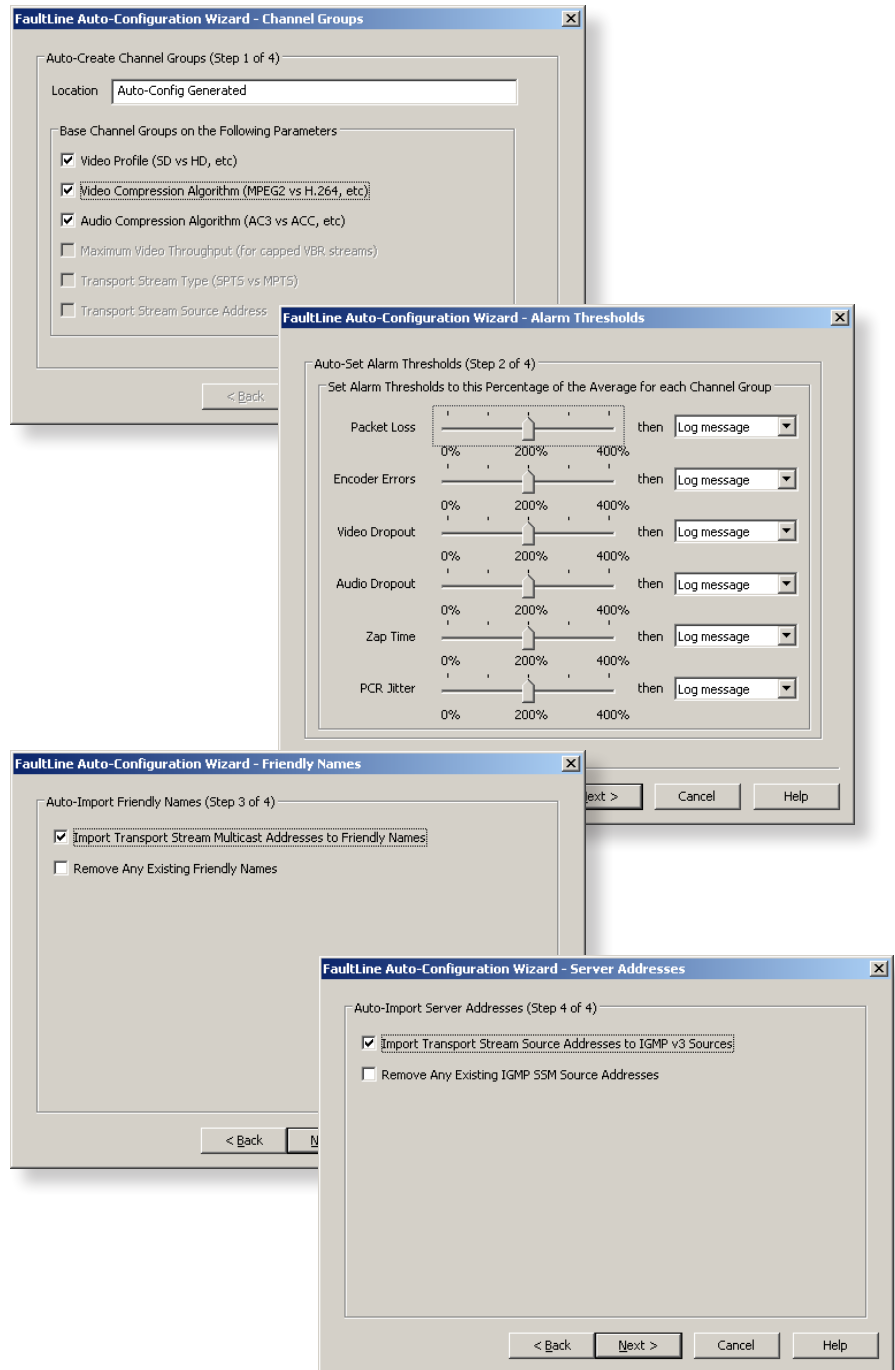


FaultLine

MPEG Analysis Suite

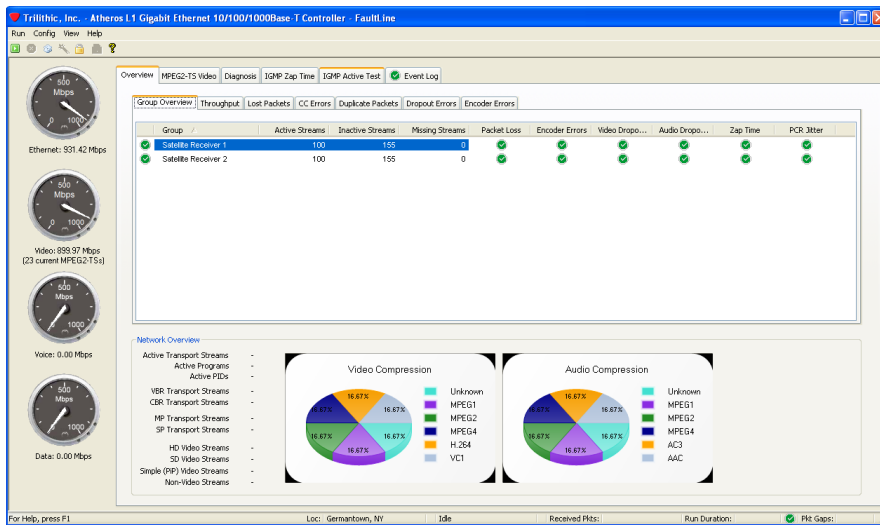
Quickly Configure Video Transport Stream Monitoring Parameters

In four easy steps, the Auto-Configuration Wizard guides you through the setup procedure for adding video transport streams to the monitored group. The Auto-Configuration Wizard automatically creates channel groups, sets alarm thresholds based on captured sample video data, imports “friendly” stream names and stream source addresses.



FaultLine

MPEG Analysis Suite



Simplified Display of Network Performance Indicators

FaultLine's network overview feature allows you to view of the number, type, and percentage of video transport streams on the network. It is the fastest and easiest way to see that of all of the transport streams are active and to gauge the performance of the streams.

Expanded Analysis and Monitoring

FaultLine allows you to double the software's analyzing and monitoring capacity by installing two copies of the software suite. This enhanced monitoring solution requires a robust server with dual NIC cards. Contact Trilithic Sales for additional hardware and software requirements.

HARDWARE REQUIREMENTS

Hardware	Desktop, laptop, or server PC
Processor	2 GHz Intel dual core Pentium® processor (minimum)
Memory	2 GB RAM
Operating System	Microsoft Windows® 2000, XP, or Vista
Network Interface	NDIS-compatible PCI Express® NIC

AVAILABLE CONFIGURATIONS:

- FaultLine application only (P/N 0930158000)
- Application with alert/SNMP/DL (P/N 093015010)