



## WorkBench and TDM Security

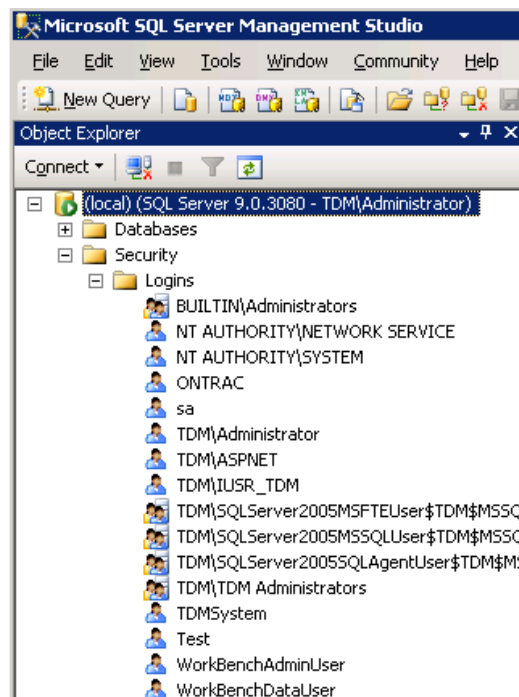
---

### Introduction

There are several usernames and passwords required to configure the TDM and WorkBench software. These are used to provide access to the TDM database, access to the meters, and access to different levels of the reporting features of TDM. This document will describe the specific purpose of each username and password.

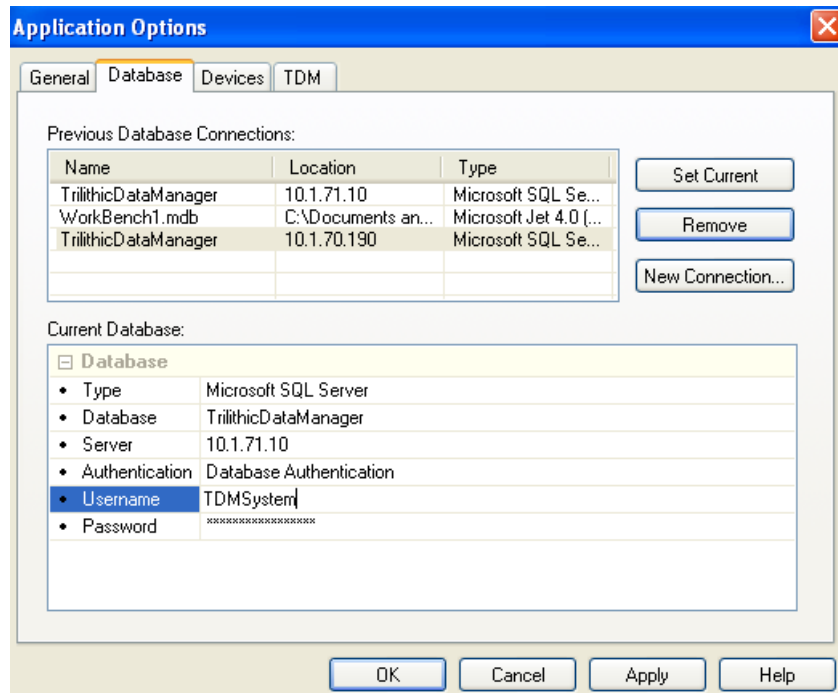
### WorkBench

The WorkBench software has two different usernames and passwords. They are located on the Database tab and the TDM tab under File\Options. The Database username and password will allow the user to point WorkBench to the TDM server database. This is a Microsoft SQL login and must be created directly on the server. This login will give the user access to all channel plans, macros, and uploaded data on the TDM server. Examples of this login already created on the server and in use in WorkBench are below:



For Additional Help, Contact  
Trilithic Applications Engineering  
1-800-344-2412 or 317-895-3600  
[support@trilithic.com](mailto:support@trilithic.com) or [www.trilithic.com](http://www.trilithic.com)

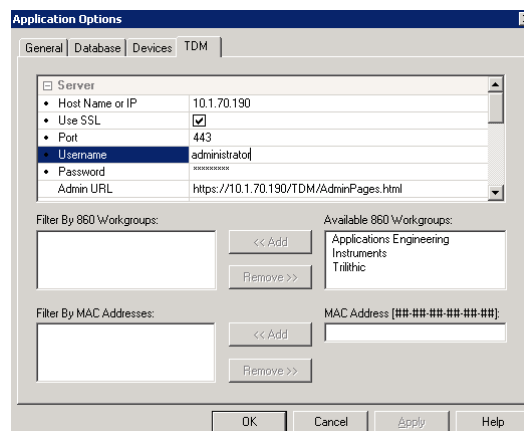
WorkBench and TDM Security  
P/N 0010275075 – Rev 06/11  
1 of 8



The second username and password is located on the TDM tab. This login gives the user access to individual inboxes and outboxes (meters) on the TDM server. This login can be a Windows login on the server or it can be the same username and password used to protect Workgroups in TDM Administration. If the login is a Windows login the user will have access to the TDM Administration home page and all the meters. If the login is a Workgroup username and password, the user will only have access to those workgroups and meters within the workgroup he has permission to view.

*Note: If Workgroup usernames and passwords are used, ALL workgroups must be password protected. All those without password protection will be visible.*

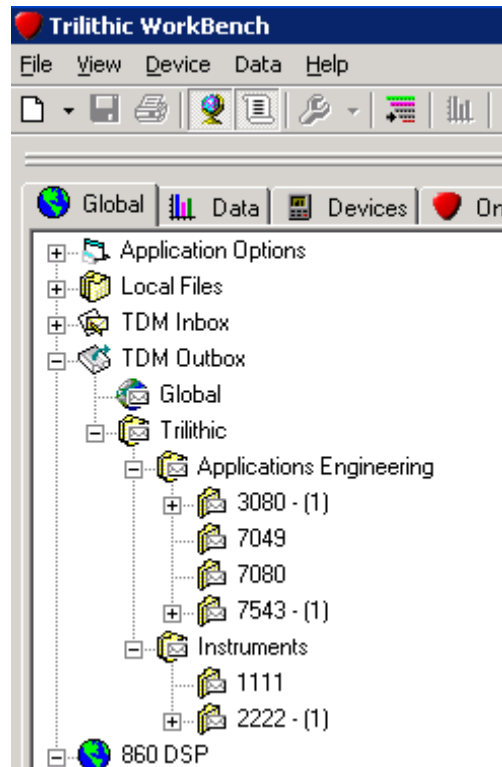
The following example shows the access using a Windows login:



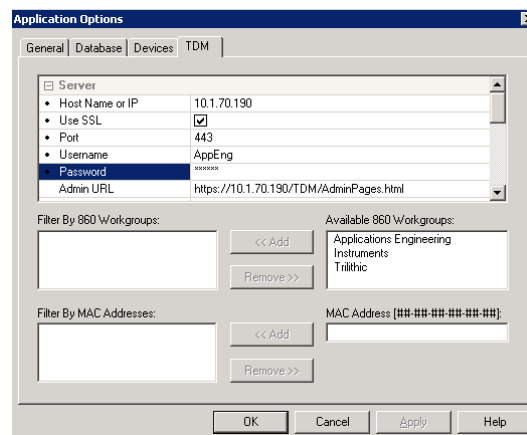
For Additional Help, Contact  
 Trilithic Applications Engineering  
 1-800-344-2412 or 317-895-3600  
[support@trilithic.com](mailto:support@trilithic.com) or [www.trilithic.com](http://www.trilithic.com)

WorkBench and TDM Security  
 P/N 0010275075 – Rev 06/11  
 2 of 8

Access to all Workgroups and meters is granted:

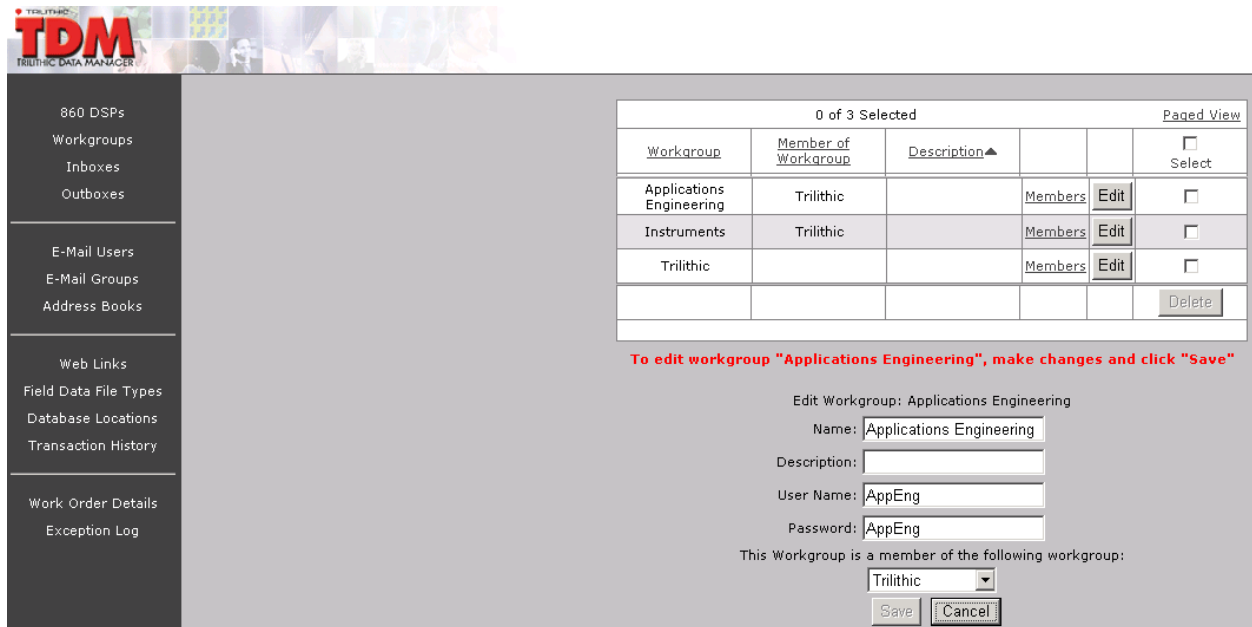


The next example uses the Workgroup username and password:



For Additional Help, Contact  
Trilithic Applications Engineering  
1-800-344-2412 or 317-895-3600  
[support@trilithic.com](mailto:support@trilithic.com) or [www.trilithic.com](http://www.trilithic.com)

WorkBench and TDM Security  
P/N 0010275075 – Rev 06/11  
3 of 8



**TDM**  
TRILITHIC DATA MANAGER

860 DSPs  
Workgroups  
Inboxes  
Outboxes

E-Mail Users  
E-Mail Groups  
Address Books

Web Links  
Field Data File Types  
Database Locations  
Transaction History

Work Order Details  
Exception Log

0 of 3 Selected					Paged View
Workgroup	Member of Workgroup	Description▲			<input type="checkbox"/> Select
Applications Engineering	Trilithic		Members	Edit	<input type="checkbox"/>
Instruments	Trilithic		Members	Edit	<input type="checkbox"/>
Trilithic			Members	Edit	<input type="checkbox"/>
					Delete

**To edit workgroup "Applications Engineering", make changes and click "Save"**

Edit Workgroup: Applications Engineering

Name: Applications Engineering

Description:

User Name: AppEng

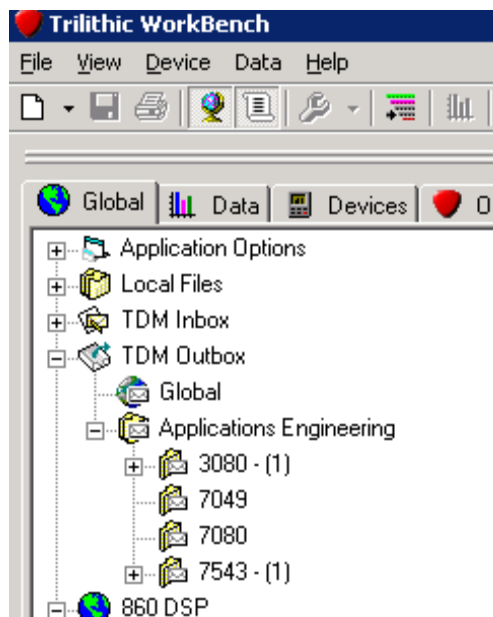
Password: AppEng

This Workgroup is a member of the following workgroup:

Trilithic

Save Cancel

Only the meters in the Workgroup are accessible:



**Trilithic WorkBench**

File View Device Data Help

Global Data Devices On

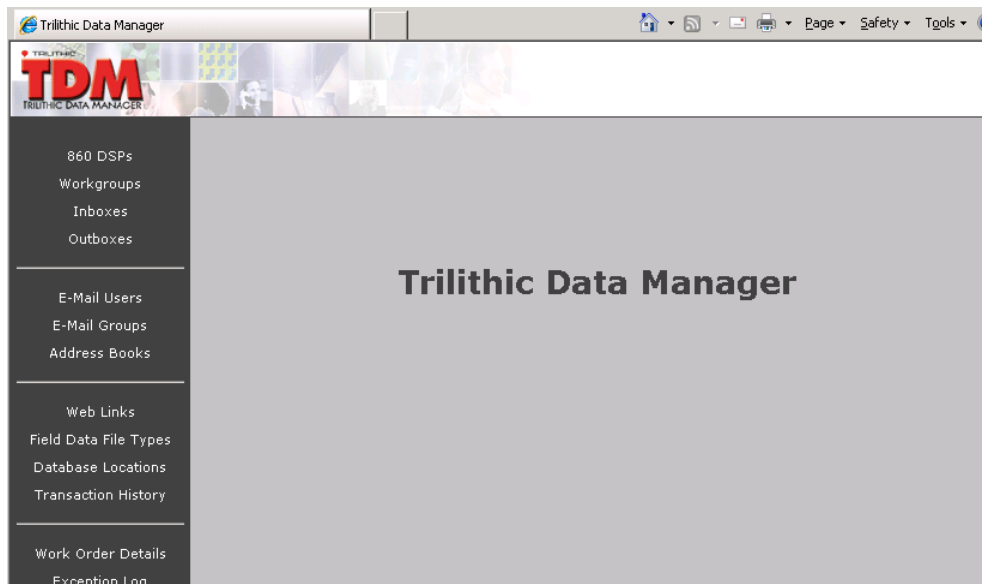
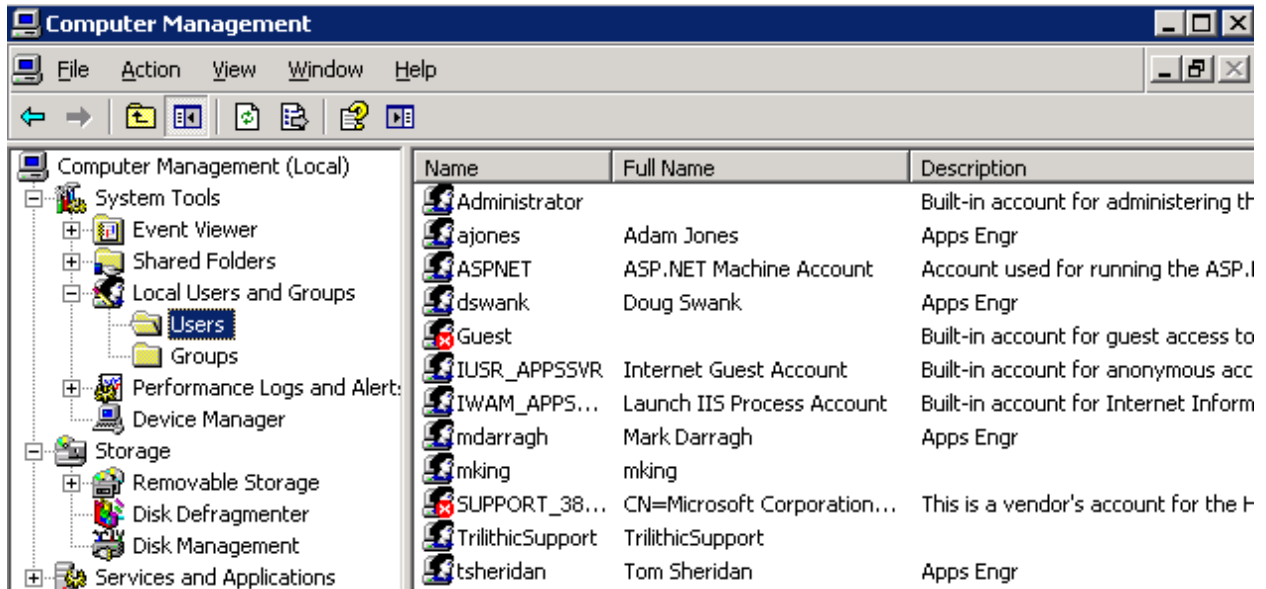
- Application Options
- Local Files
- TDM Inbox
- TDM Outbox
- Global
  - Applications Engineering
    - 3080 - (1)
    - 7049
    - 7080
    - 7543 - (1)
- 860 DSP

For Additional Help, Contact  
Trilithic Applications Engineering  
1-800-344-2412 or 317-895-3600  
[support@trilithic.com](mailto:support@trilithic.com) or [www.trilithic.com](http://www.trilithic.com)

WorkBench and TDM Security  
P/N 0010275075 – Rev 06/11  
4 of 8

## TDM Administration

As briefly stated in the previous section, access to the TDM Administration page requires a Windows login on the server. This page allows the user to authorize or unauthorize meters on the server, create and edit workgroups, and track the communication between the meters and the server. When first accessing this page, a username and password prompt will appear. Below is an example of this type of login:



For Additional Help, Contact  
 Trilithic Applications Engineering  
 1-800-344-2412 or 317-895-3600  
[support@trilithic.com](mailto:support@trilithic.com) or [www.trilithic.com](http://www.trilithic.com)

WorkBench and TDM Security  
 P/N 0010275075 – Rev 06/11  
 5 of 8

## TDM Data Access

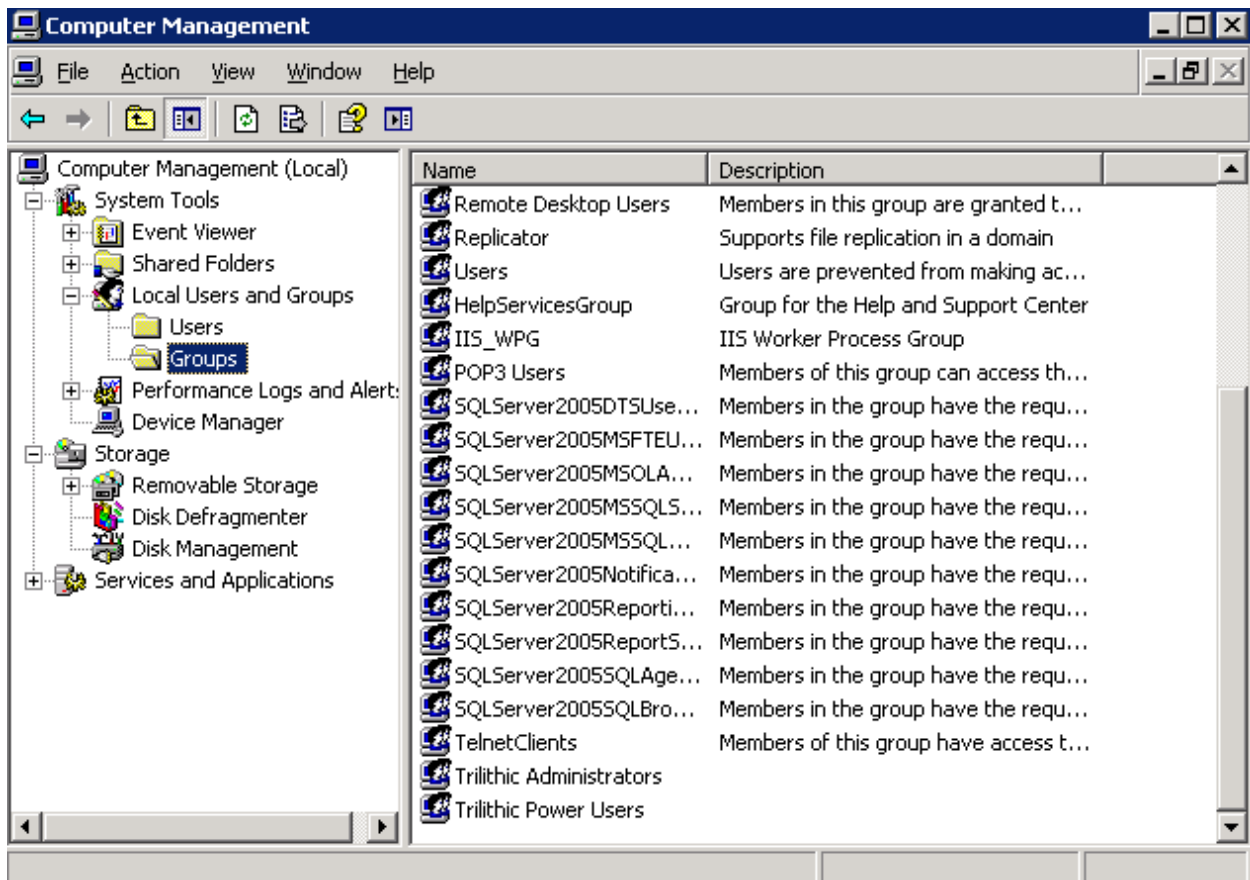
TDM Data Access is the web-based reporting function of TDM. It also uses a server based Windows login with three different levels of access. The access level is determined by a Group on the server. In other words, a Windows username must be a member of a User Group to have rights to Data Access functions. The group names and levels of access are as follows:

**Trilithic Administrators:** Full access, can create and save reports, can edit reports, and remove reports from the main page.

**Trilithic Power Users:** Limited access, can run previously saved reports, can create new reports but cannot save or remove existing reports.

**Users:** Lowest level of access, can only run previously saved reports. Cannot create or edit existing reports.

Below is an example of a server with these groups already created:

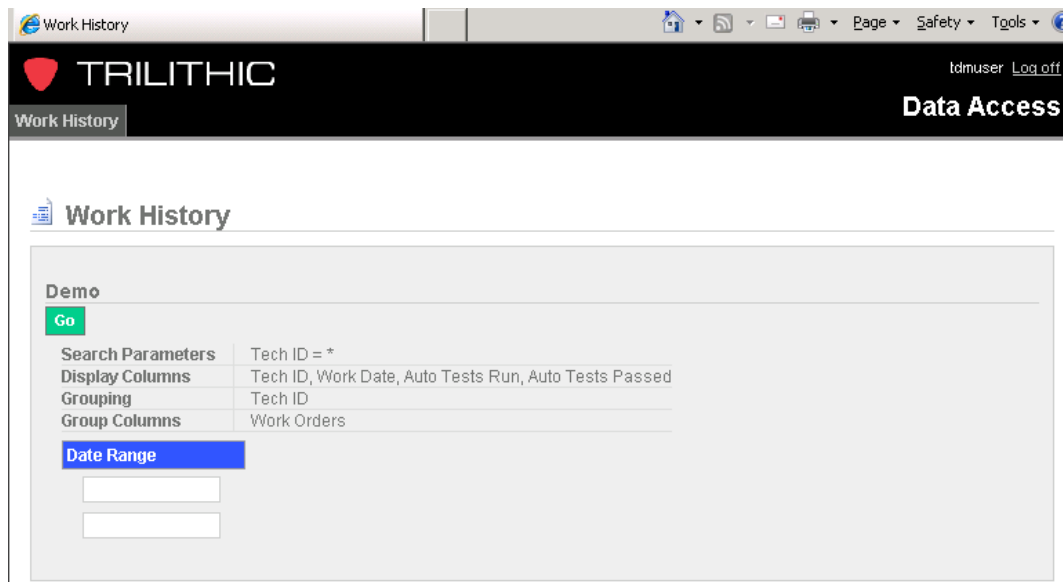
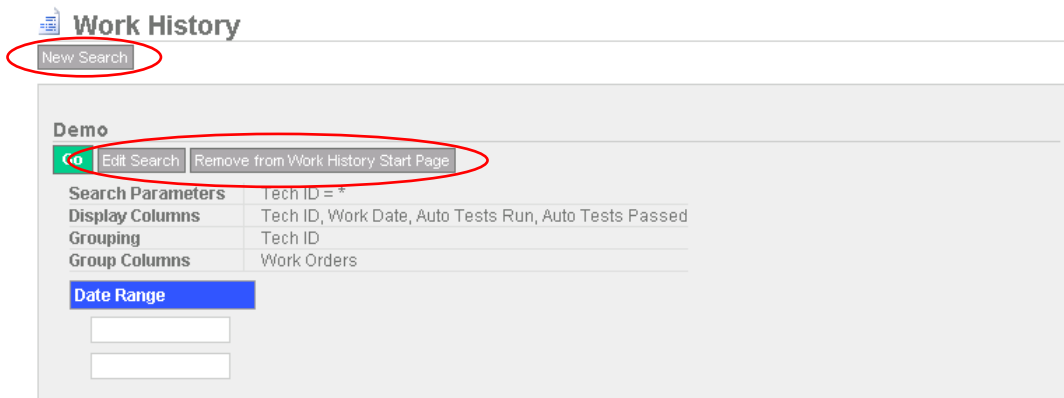


For Additional Help, Contact  
 Trilithic Applications Engineering  
 1-800-344-2412 or 317-895-3600  
[support@trilithic.com](mailto:support@trilithic.com) or [www.trilithic.com](http://www.trilithic.com)

WorkBench and TDM Security  
 P/N 0010275075 – Rev 06/11  
 6 of 8

When a TDM Data Access user first logs in he will be prompted for a username and password. The functions he will have access to are based on the group he is a member of. Below are examples of a user with Trilithic Administrator access and just

## User Access



Notice the missing commands when logged in as a User only. The Trilithic Power Users login will have the same functions as the Trilithic Administrator except for the save and remove from start page option.

For Additional Help, Contact  
Trilithic Applications Engineering  
1-800-344-2412 or 317-895-3600  
[support@trilithic.com](mailto:support@trilithic.com) or [www.trilithic.com](http://www.trilithic.com)

WorkBench and TDM Security  
P/N 0010275075 – Rev 06/11  
7 of 8

**Conclusion**

These different security levels are designed to allow all users of the TDM system, from the technician in the field to the administrator of the server, to benefit from TDM's many features. As with any security system, some forethought should be used before usernames and passwords are created and assigned.

For Additional Help, Contact  
Trilithic Applications Engineering  
1-800-344-2412 or 317-895-3600  
[support@trilithic.com](mailto:support@trilithic.com) or [www.trilithic.com](http://www.trilithic.com)

WorkBench and TDM Security  
P/N 0010275075 – Rev 06/11  
8 of 8