



Adding Users on the Viewer II Server

Introduction

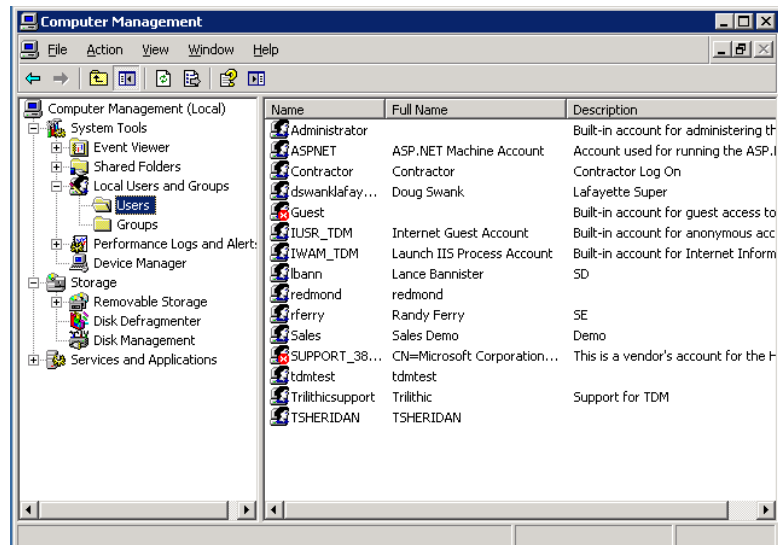
The purpose of this paper is to provide instruction on adding authorized users to the Viewer II server.

NOTE: To add an authorized user, you must be logged on to the server directly or through remote desktop with administrator rights.

NOTE: Users do not have rights to access the SST Device Manager or to change the Element View. They can view any node but cannot change how Viewer II is configured.

Adding an Authorized User

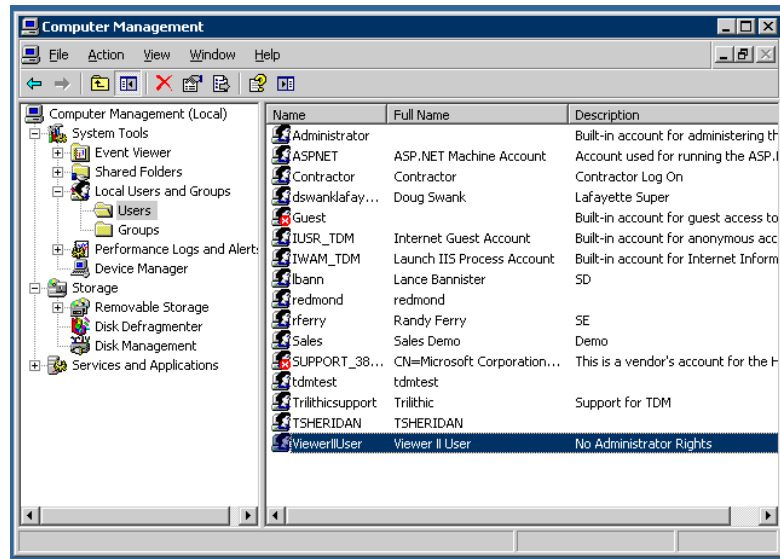
After logging on to the server, click the Windows **Start** button, select **Administrative Tools**, and then select **Computer Management**. In the window that appears, click the plus (+) sign beside **Local Users and Groups**. Click the **Users** folder.



For Additional Help Contact
Trilithic Applications Engineering
1-800-344-2412 or 317-895-3600
support@trilithic.com or
www.trilithic.com

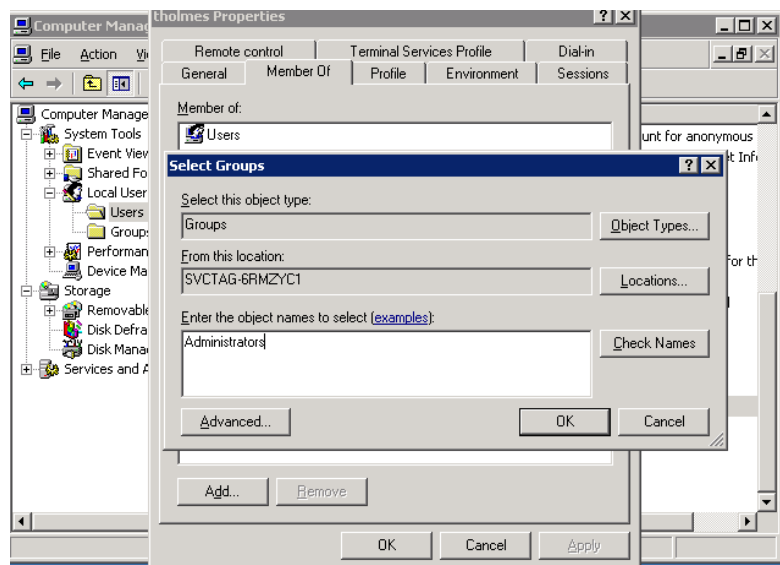
Adding Users on the Viewer II Server
P/N 0010275065 – Rev 07/10
1 of 3

The user has been created and will appear in the **User List**:



To grant permission for a specific user to access the **SST Device Manager** and to change the **Element View**, they must have administrator rights.

To grant a user administrator rights, right-click on the user name and select **Properties** from the floating menu. On the window that appears next, click the **Member Of** tab. Add **Administrators** then click the **OK** button. The account associated with this user name will now have rights to configure the SSTs and change the element view.



For Additional Help Contact
 Trilithic Applications Engineering
 1-800-344-2412 or 317-895-3600
support@trilithic.com or
www.trilithic.com

Adding Users on the Viewer II Server
 P/N 0010275065 – Rev 07/10
 3 of 3