

860 DSPi Wi-Fi Option

Wi-Fi (802.11bg) in the 860 DSPi

Cable companies are beginning to deploy Wi-Fi networks within their communities as a differentiating feature that enables data customers to connect in a wide variety of locations. This attractive add-on service helps to hold customers in the highly competitive telecommunications market.

Cable technical personnel must be able to verify that the company's Wi-Fi access points are properly broadcasting with adequate field strength and security. A variety of means are currently available for viewing local wireless access points, with the most typical being the wireless connection application on most notebook PCs. Techs do not always have access to a notebook PC, so the addition of a Wi-Fi option to their field analyzer is an attractive concept. The survey mode can also be used on data service installations to verify wireless accessibility throughout a customer's home, and to verify that the configured channel is not conflicting with a neighbor's access point.



Trilithic offers a Wi-Fi adaptor for the 860 DSPi. In addition to providing an alternate communications path for measurement data, unit configurations and internet sites, the new feature performs common Wi-Fi network verification tests:

- Detects in-range wireless IEEE 802.11 b/g access points and lists SSID's and channels
- Displays the up to 10 access points, with the one currently connected highlighted
- List includes received signal strength in dBm for each access point, and indicates security enabled/disabled
- Indicates the type of access point (infrastructure or ad hoc)

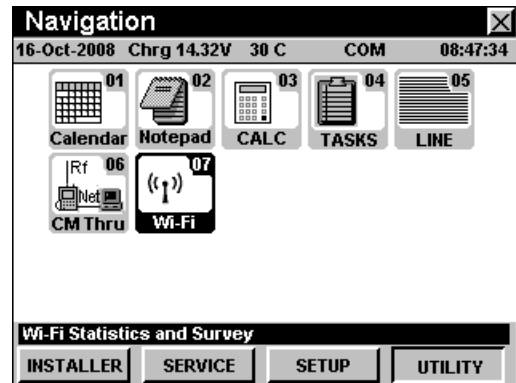
For Additional Help Contact
Trilithic Applications Engineering
1-800-344-2412 or 317-895-3600
support@trilithic.com or
www.trilithic.com

860 DSPi Wi-Fi Option
P/N 0010275051 – Rev 8/09
1 of 5

Using the Wi-Fi Option

The 860 DSPi with Wi-Fi option can be used to survey available access points, or to access a network to perform tests such as ping, trace route, throughput, VoIP, and verification of browser functionality. The survey mode is accessed via the **Wi-Fi** Icon on the **UTILITY** tab.

Note: All network access methods are mutually exclusive. You cannot simultaneously use any combination of the external RJ-45, the internal cable modem, or the Wi-Fi adaptor.

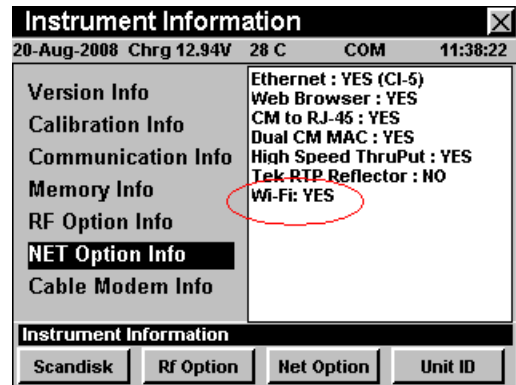


Checking the 860 DSPi for Wi-Fi Compatibility

To check for Wi-Fi compatibility, select the **Info** Icon on the **SETUP** tab. The **NET Option Info** list will indicate the presence of the option with the text *Wi-Fi: YES*.

This option is typically factory installed (field installation is only available through authorized service providers).

Call your Trilithic Sales Professional for more information (800-344-2412).



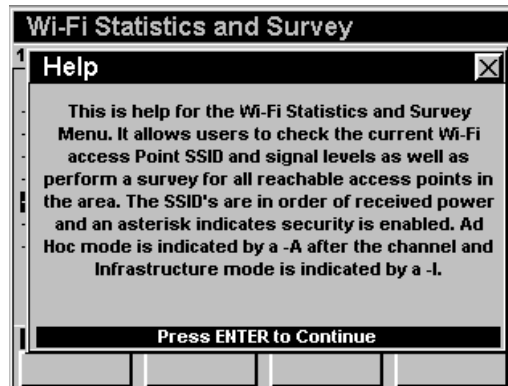
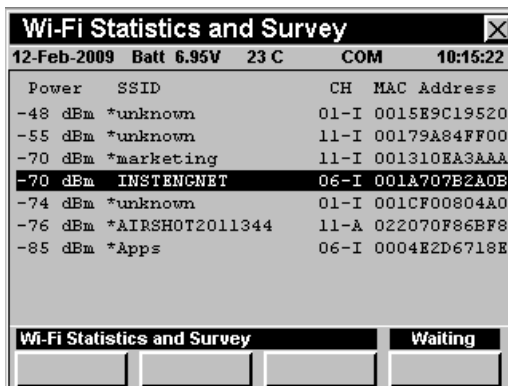
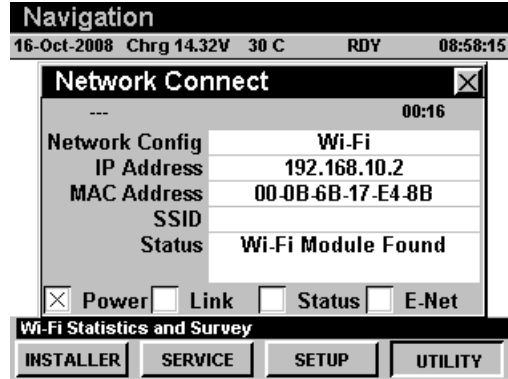
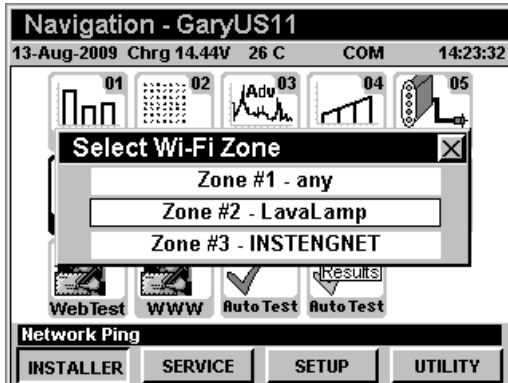
For Additional Help Contact
 Trilithic Applications Engineering
 1-800-344-2412 or 317-895-3600
support@trilithic.com or
www.trilithic.com

860 DSPi Wi-Fi Option
 P/N 0010275051 – Rev 8/09
 2 of 5

Using the Wi-Fi Survey Mode

The Wi-Fi survey menu is very simple. When the user enters the mode, you can select from a list of configured Wi-Fi zones. Once you have chosen a Wi-Fi zone, the instrument will connect to the associated Wi-Fi access point and a list of access points within range is displayed. The Wi-Fi access point that the meter is currently connected to will appear highlighted by a black bar. The list is auto-sorted with the access point with the highest level at the top and a descending order of received power level.

Up to 10 access points are shown along with their SSID and power level. If the SSID is unknown, the word unknown is displayed. An asterisk appearing next to an SSID indicates that security is enabled. Also, the default assumes the access point is part of an infrastructure mode network. If an SSID is setup for an ad hoc wireless network, the words "ad hoc" appear next to the SSID.



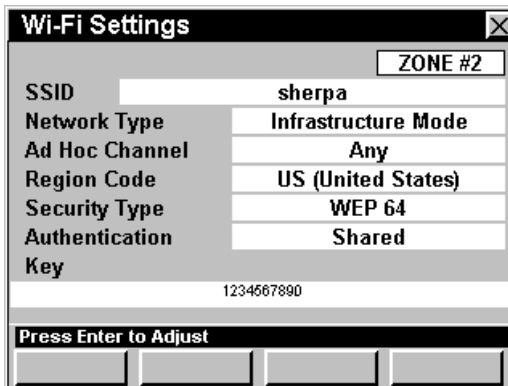
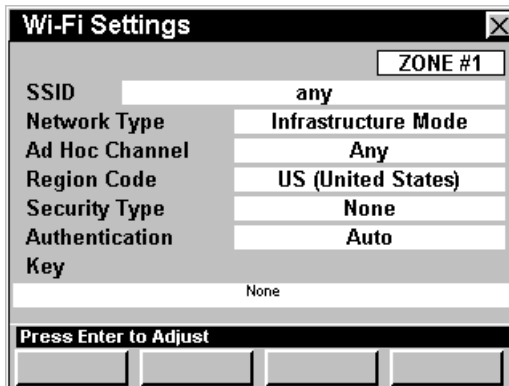
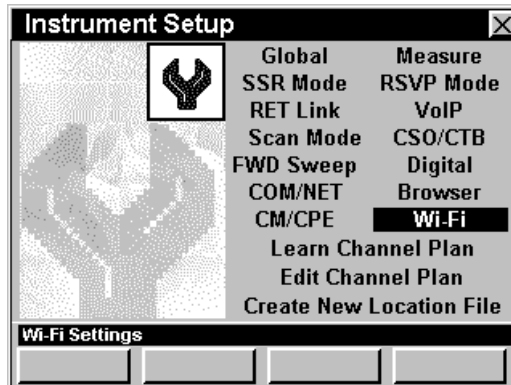
For Additional Help Contact
 Trilithic Applications Engineering
 1-800-344-2412 or 317-895-3600
support@trilithic.com or
www.trilithic.com

860 DSPi Wi-Fi Option
 P/N 0010275051 – Rev 8/09
 3 of 5

Wi-Fi Mode Setup

The user can configure up to 3 default Wi-Fi configurations (called zones) using the setup menu. The zone selected when the user leaves setup is the newly active zone that the meter will attempt to use the next time Wi-Fi is activated.

Note: The main setup menu has been rearranged slightly. The Level Mode setup elements have been moved to Global, Measurements, and Scan and the VoIP listing took its place. Wi-Fi setup then took the place of VoIP.



For Additional Help Contact
 Trilithic Applications Engineering
 1-800-344-2412 or 317-895-3600
support@trilithic.com or
www.trilithic.com

860 DSPi Wi-Fi Option
 P/N 0010275051 – Rev 8/09
 4 of 5



Using the Wi-Fi Mode

Perform the following steps in order to use the Wi-Fi Mode;

1. To communicate (receive or send information) using Wi-Fi, the user selects Wi-Fi as the network login default (similar to ping or cable modem) in the Setup, COM/NET settings. When the user activates the network by entering Ping, Trace Route, Browser, etc; the meter logs into the Wi-Fi network and functions the same as when connected using the internal cable modem, or the RJ-45 (network adapter) and all network functions should be available.

***Note:** The meter must either be able to acquire an IP address from the network, or have been setup with a static IP address if using an ad hoc network. The Wi-Fi survey mode is also available at this time.*

2. Alternatively, the user can simply enter the Wi-Fi survey mode without acquiring an IP address, and the meter will not attempt to login to the Wi-Fi network. In this mode of operation the survey is available, but other network related test modes are not. When you exit the survey mode, the meter automatically powers down the Wi-Fi module.

Workbench Support

Workbench version 2.2.0 and higher supports Wi-Fi data logs and up to 3 default Wi-Fi configurations.

For Additional Help Contact
Trilithic Applications Engineering
1-800-344-2412 or 317-895-3600
support@trilithic.com or
www.trilithic.com

860 DSPi Wi-Fi Option
P/N 0010275051 – Rev 8/09
5 of 5