

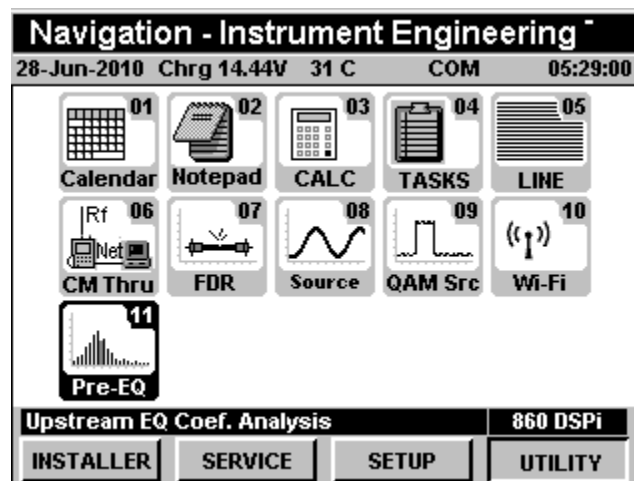
## 860 DSPi Upstream Equalization

### Upstream Equalization

Upstream Equalization analysis takes the EQ taps from the cable modem and displays their values. It also calculates and displays a response and delay graph. Currently this mode only works on a DOCSIS 2.0 modem. The Upstream Equalization option is now available, option P/N 0930081017. 860 DSPi owners with the latest firmware update (version 11.1.1.1 or higher) may activate the option in the field by purchasing a key code.

### How do I use this new Mode

First you have to purchase and activate the option, then rebuild your icons. The new menu is called Pre-EQ and is located in the UTILITY section of the Navigation Menu.

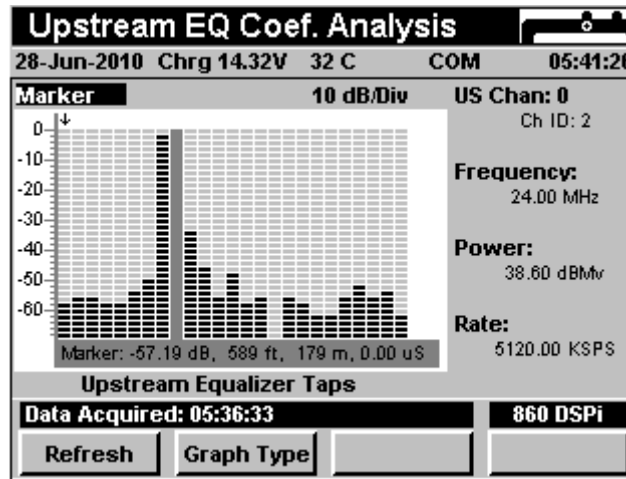


**Upstream EQ From the Navigation Menu**

For Additional Help Contact  
Trilithic Applications Engineering  
1-800-344-2412 or 317-895-3600  
[support@trilithic.com](mailto:support@trilithic.com) or  
[www.trilithic.com](http://www.trilithic.com)

860 DSPi Upstream Equalization  
P/N 0010275070 – Rev 1/11  
1 of 3

When the Pre-EQ mode is selected, the built in DOCSIS 2.0 cable modem will be used to connect. Then, the Pre-EQ mode will display the current equalizer taps.



### Upstream Equalizer Taps Graph

The Pre-EQ mode you should notice the following controls:

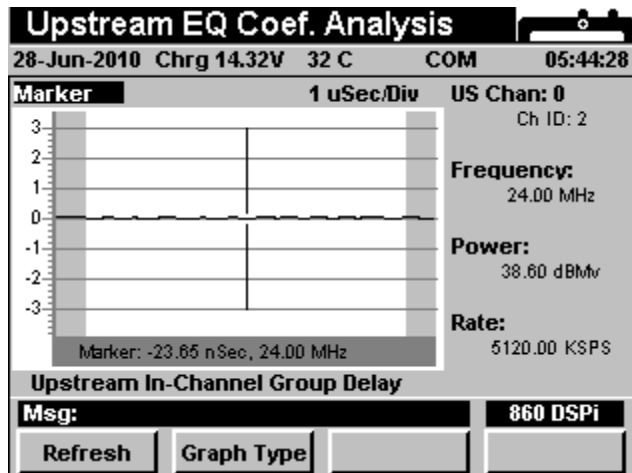
- **Marker:** This moves the marker to the different taps and updates the marker data.
- **Refresh:** This button is used to fetch new data, the Pre-EQ menu is static and does not automatically fetch new data.
- **Graph Type:** This allows you to switch between the three Graphs provided in the Pre-EQ menu as follows:
  - a. Upstream Equalizer Taps
  - b. Upstream In-Channel Response
  - c. Upstream Group Delay

For Additional Help Contact  
Trilithic Applications Engineering  
1-800-344-2412 or 317-895-3600  
[support@trilithic.com](mailto:support@trilithic.com) or  
[www.trilithic.com](http://www.trilithic.com)

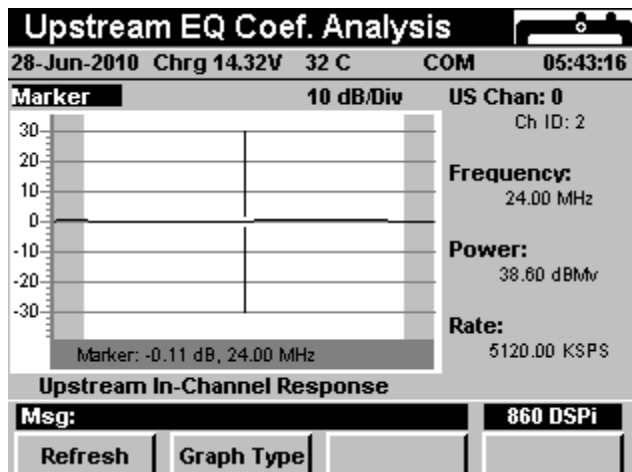
860 DSPi Upstream Equalization  
P/N 0010275070 – Rev 1/11  
2 of 3



## Examples of Group Delay and In-Channel Response



**Upstream In-Channel Group Delay**



**Upstream In-Channel Response**

For Additional Help Contact  
 Trilithic Applications Engineering  
 1-800-344-2412 or 317-895-3600  
[support@trilithic.com](mailto:support@trilithic.com) or  
[www.trilithic.com](http://www.trilithic.com)

860 DSPi Upstream Equalization  
 P/N 0010275070 – Rev 1/11  
 3 of 3