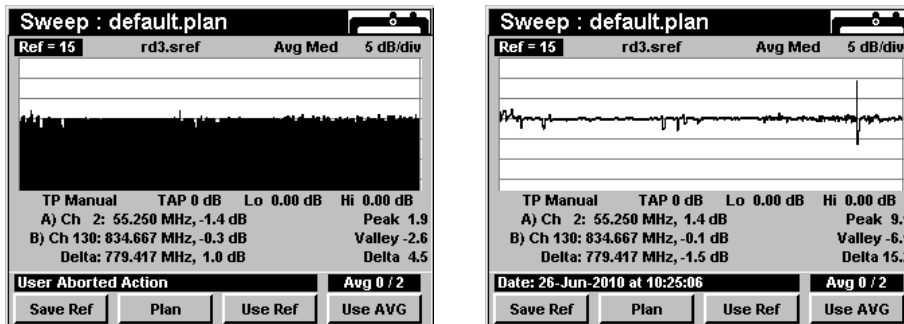


860 DSPi Displaying a Saved Reference as a Second Trace

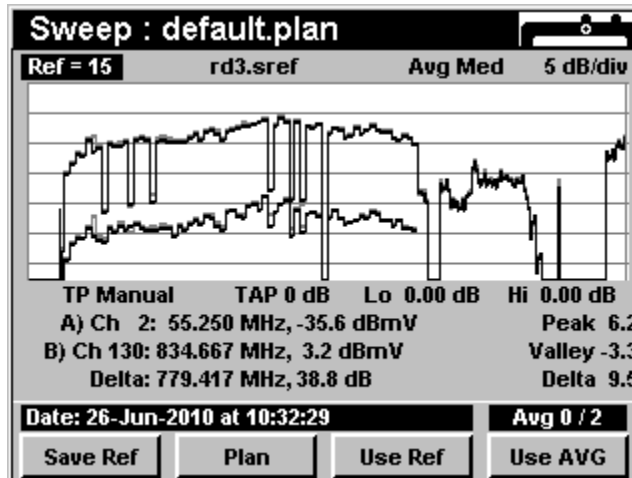
Overview

Sweep Mode has always had the ability to display reference data. However, the original implementation of Sweep Mode displayed the reference data only as an A-B line graph or as an A-B grass graph as shown in the following figure.



Old Sweep Reference Display

The new reference feature allows a reference to be below live data. As seen in the following figure. The new reference feature is now available to 860 DSP or 860 DSPi owners with the latest firmware update (version 11.1.1.1 or higher).



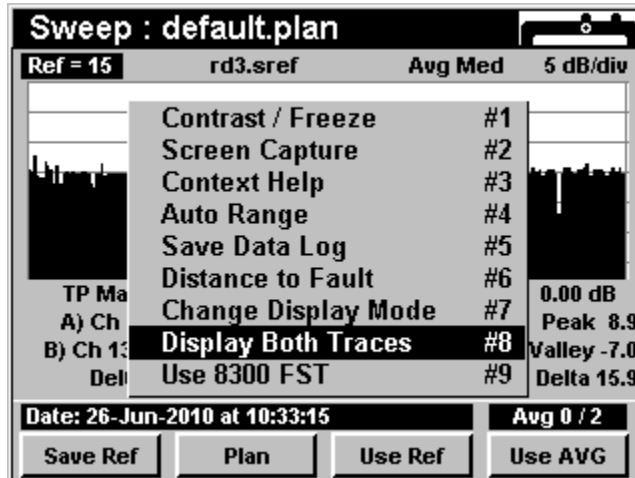
Sweep Reference Display with Two Traces

For Additional Help Contact
 Trilithic Applications Engineering
 1-800-344-2412 or 317-895-3600
support@trilithic.com or
www.trilithic.com

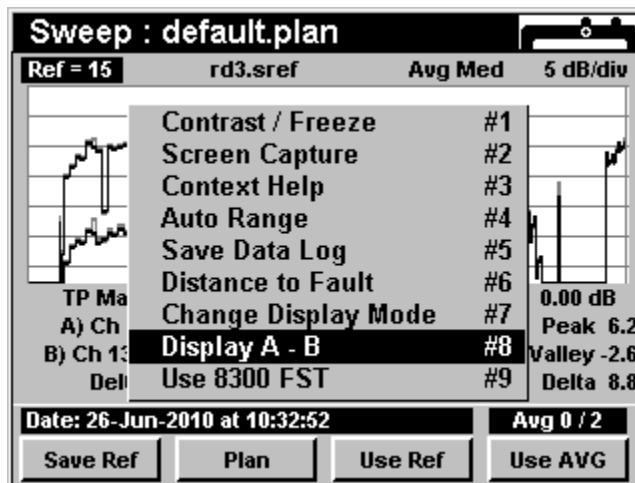
860 DSPi Displaying a Saved Reference as a Second
 Trace
 P/N 0010275072 – Rev 1/11
 1 of 3

How Do I Use this New Feature?

First, you use Sweep Mode as you normally would. Then, if you select the Function button, the new menu choice "Display Both Traces" will be displayed in the pop up function menu. Select this function to enable the new reference mode. If you want to go back to the single reference display, select the new menu choice "Display A-B" from the function menu.



Sweep Reference Pop-Up Menu to display Two Traces



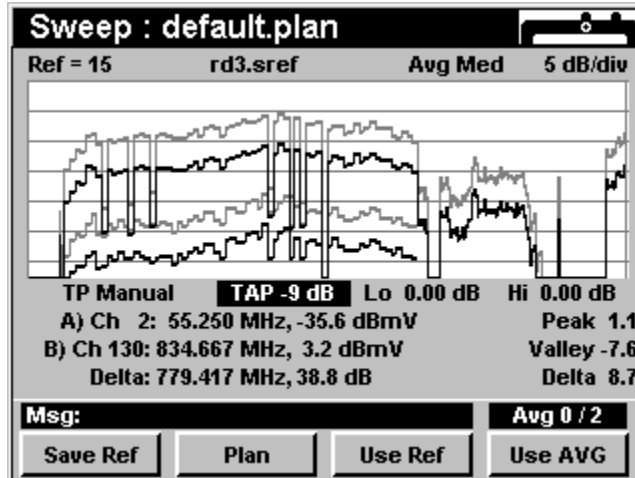
Sweep Reference Pop-Up Menu to display A-B

For Additional Help Contact
Trilithic Applications Engineering
1-800-344-2412 or 317-895-3600
support@trilithic.com or
www.trilithic.com

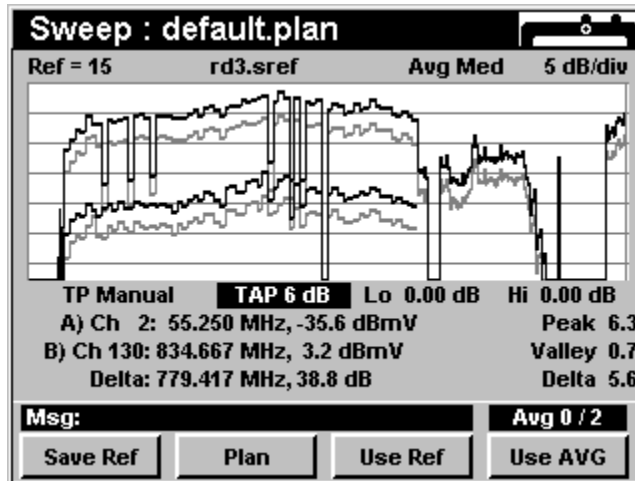
860 DSPi Displaying a Saved Reference as a Second
Trace
P/N 0010275072 – Rev 1/11
2 of 3

What if I Want to Adjust the Reference Sweep for Level?

The reference sweep for Level can be changed by adjusting the tap accordingly.



Sweep Reference Negative Tap



Sweep Reference Adjusted for Positive Tap

For Additional Help Contact
 Trilithic Applications Engineering
 1-800-344-2412 or 317-895-3600
support@trilithic.com or
www.trilithic.com

860 DSPi Displaying a Saved Reference as a Second
 Trace
 P/N 0010275072 – Rev 1/11
 3 of 3