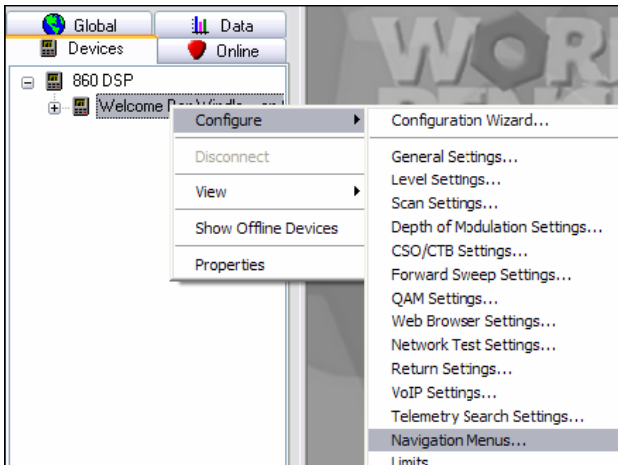


## Adding a Macro Shortcut Icon to Your 860 DSPi Using WorkBench

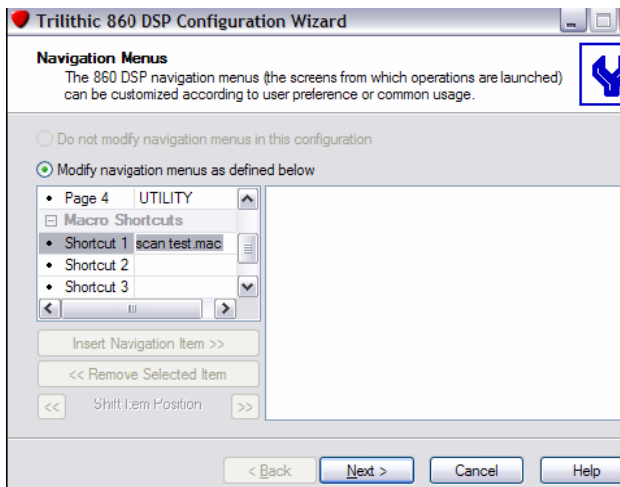
---

This white paper outlines the method of adding a stand-alone icon for initiating an Auto Test Macro.

1. Connect to the desired 860DSP meter using WorkBench.
2. Under the Devices tab in WorkBench, right-click the meter and select Configure -> Navigation Menus.



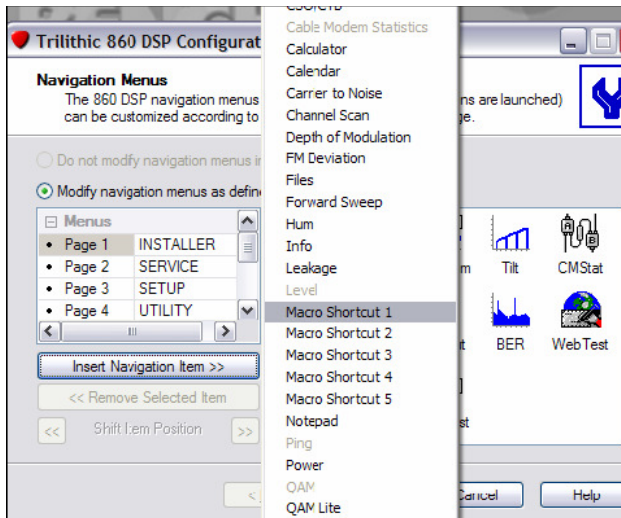
3. Scroll down in the left pane and add the name of the macro you wish to use for the icon to an empty shortcut space under Macro Shortcuts.



4. Scroll up in the left pane and select the Navigation Menu you wish to add the Macro Shortcut Icon to, select Insert Navigation Item and select the Macro Shortcut you wish to add.

For Additional Help Contact  
 Trilithic Applications Engineering  
 1-800-344-2412 or 317-895-3600  
[support@trilithic.com](mailto:support@trilithic.com) or  
[www.trilithic.com](http://www.trilithic.com)

Adding a Macro Shortcut Icon to Your 860 DSPi Using  
 WorkBench  
 P/N 0010275014 – Rev 8/07  
 1 of 2



5. Click Next and then Finish.
6. You should now have a Macro Shortcut Icon displayed in your desired Navigation Menu on your 860DSP.

For Additional Help Contact  
Trilithic Applications Engineering  
1-800-344-2412 or 317-895-3600  
[support@trilithic.com](mailto:support@trilithic.com) or  
[www.trilithic.com](http://www.trilithic.com)

Adding a Macro Shortcut Icon to Your 860 DSPi Using  
WorkBench  
P/N 0010275014 – Rev 8/07  
2 of 2