



860 DSPi Firmware Upgrade Instructions

This Application Note discusses how to upgrade the firmware of the 860 DSPi. There are three ways to upgrade the 860 DSPi as follows:

- Serial – Use a serial cable to directly connect a PC to the 860 DSPi.
- Ethernet - Use a router that is configured as a DHCP server. You must first be sure that the router you are using is setup to assign IP addresses using DHCP (Dynamic Host Configuration Protocol).
- Ethernet - Use a cross-over cable to directly connect a PC and the 860 DSPi that are both assigned a static IP address within the same range.

Serial Connection

Prerequisites

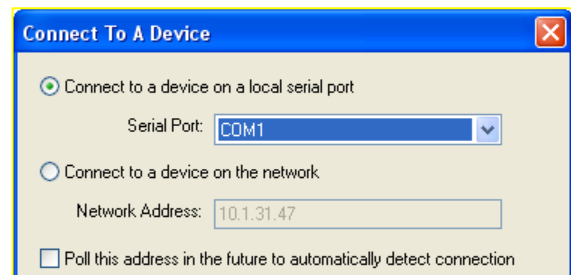
The following tasks must be completed before performing the firmware upgrade:

- Connect the 860 DSPi to the PC using the 860 DSPi serial cable.
- Connect the 860 DSPi to the charge cube and plug the charge cube into AC power.
- You must have WorkBench Software.

Upgrade Firmware

Perform the following steps using WorkBench:

1. Under the **Online** tab select the “Updates & Upgrades” link, and then select the “Click here to download 860 DSP or 860 DSPi firmware” link. This will download the firmware upgrade (.860) file.
2. Under the **Devices** tab, right-click **860 DSP**, and then select “New 860 DSP Connection...”.
3. Select the “Connect to a device on a local serial port” radio button and select the Serial Port that the 860 DSPi is connected to.
4. Select the **Connect...** button.

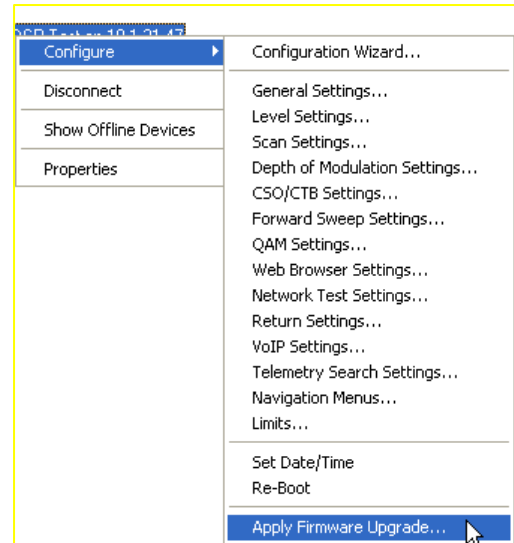


For Additional Help Contact
Trilithic Applications Engineering
1-800-344-2412 or 317-895-3600
support@trilithic.com or
www.trilithic.com

860 DSPi Firmware Upgrade Instructions
P/N 0010275001 – Rev 6/11
1 of 15



5. Right-click on the device, then hover over the “Configure” menu, and then select “Apply Firmware Upgrade...”.
6. Select the firmware upgrade (.860) file that was saved in Step 1, and then select the **Open** button.



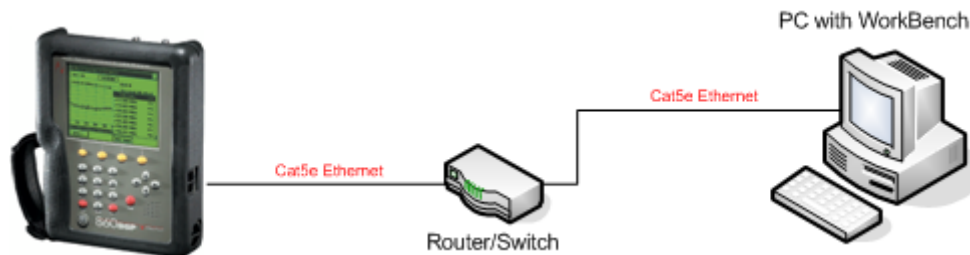
Ethernet Connection

Using a Router/Switch

Prerequisites

The following tasks must be completed before performing the firmware upgrade:

- Connect the 860 DSPi to the router/switch using a Cat5e Ethernet cable.
- Connect the 860 DSPi to the charge cube and plug the charge cube into AC power.
- Connect a PC to the router/switch.



For Additional Help Contact
Trilithic Applications Engineering
1-800-344-2412 or 317-895-3600
support@trilithic.com or
www.trilithic.com

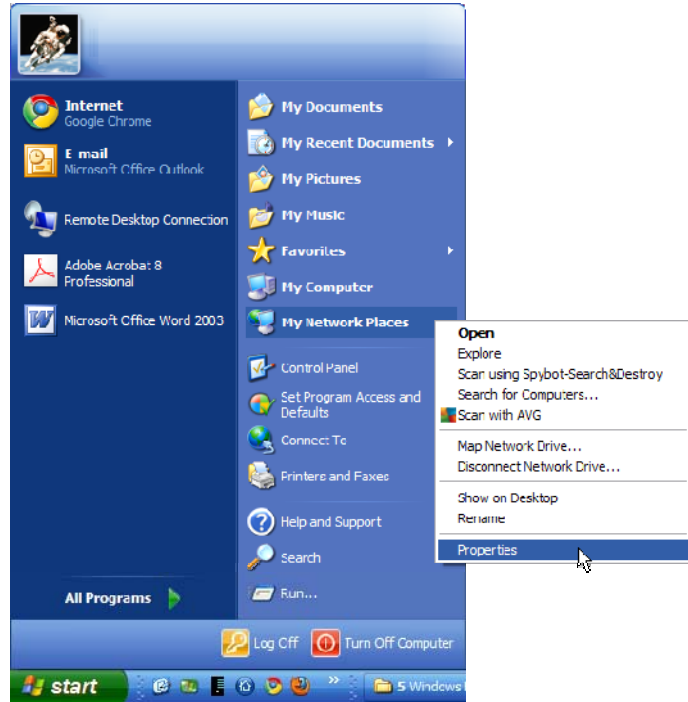
860 DSPi Firmware Upgrade Instructions
P/N 0010275001 – Rev 6/11
2 of 15



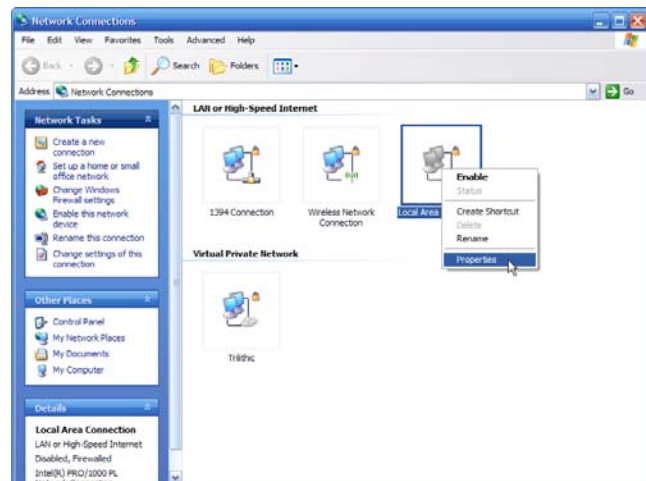
Configure the PC to Obtain an IP Address Automatically

Window XP Method

1. Select the **Start** button, then right-click **My Network Places** and then select "Properties".



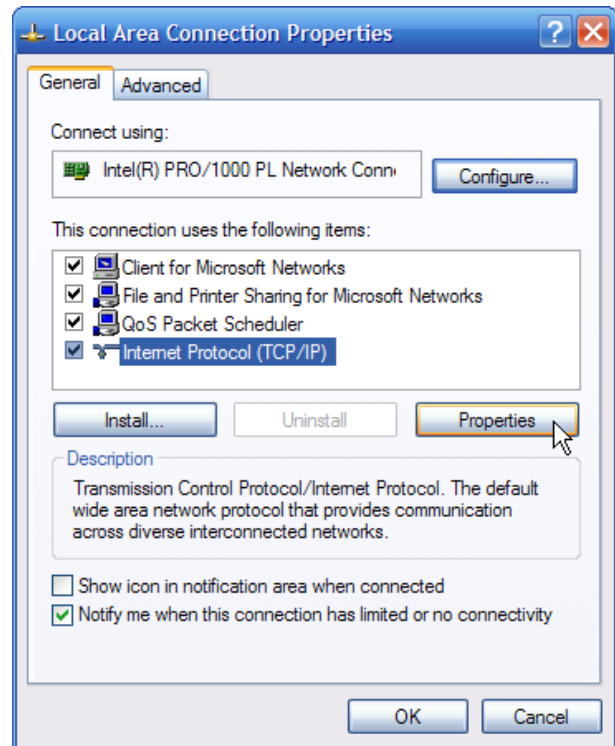
2. Right-click **Local Area Connection** and then select "Properties".



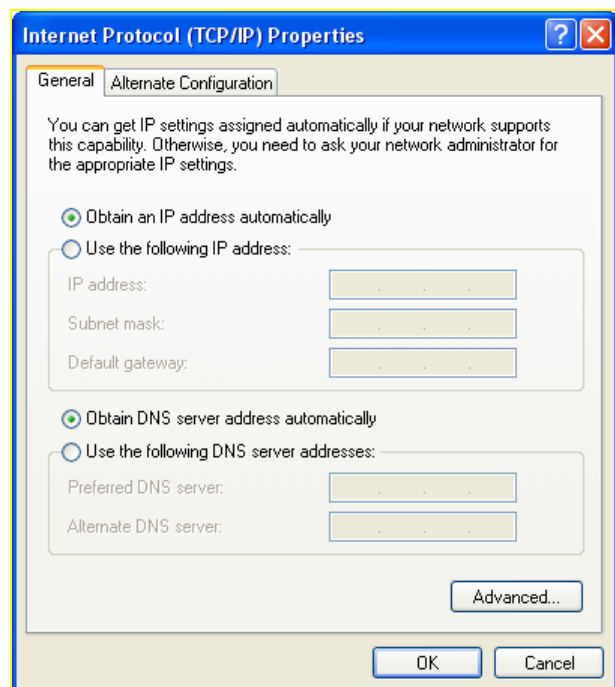
For Additional Help Contact
Trilithic Applications Engineering
1-800-344-2412 or 317-895-3600
support@trilithic.com or
www.trilithic.com

860 DSPi Firmware Upgrade Instructions
P/N 0010275001 – Rev 6/11
3 of 15

3. Select “Internet Protocol (TCP/IP)”, and then select the **Properties** button.



4. Select the “Obtain an IP address automatically” radio button.
5. Select the **OK** button to save the configuration changes.

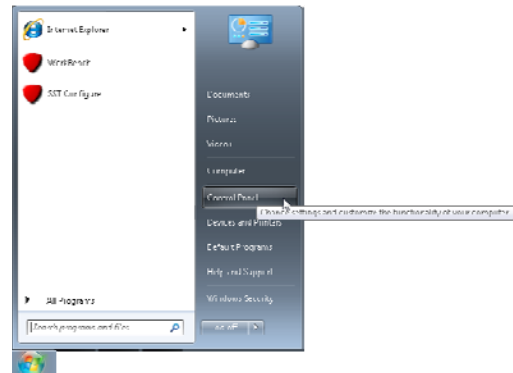


For Additional Help Contact
Trilithic Applications Engineering
1-800-344-2412 or 317-895-3600
support@trilithic.com or
www.trilithic.com

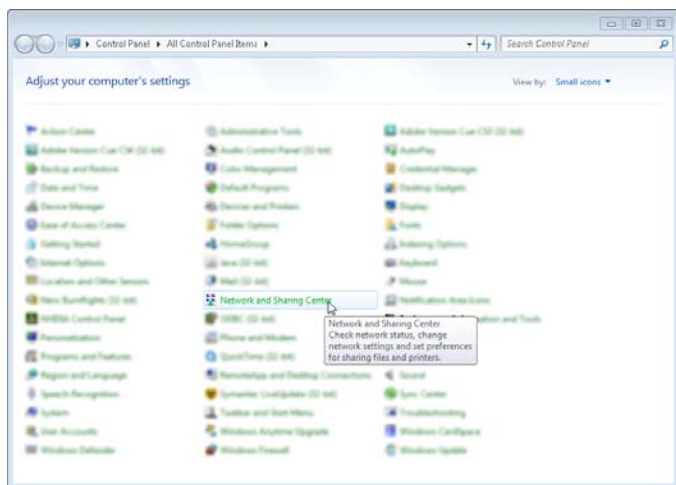
860 DSPi Firmware Upgrade Instructions
P/N 0010275001 – Rev 6/11
4 of 15

Window7 Method

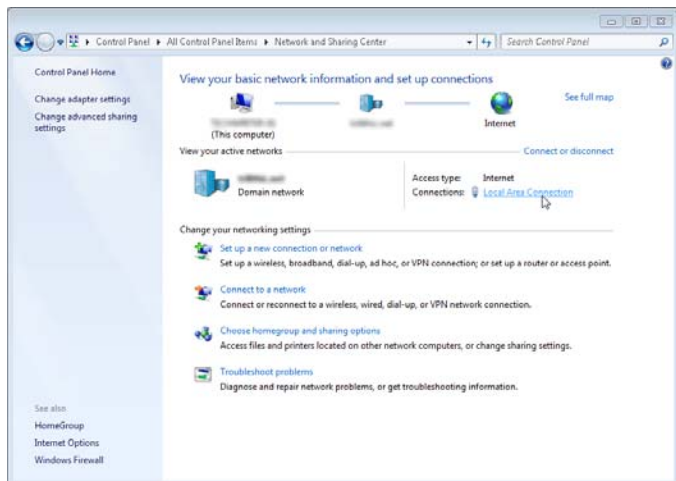
1. Select the **Start** button, then click **Control Panel**.



2. From the Control Panel, select the **Network and Sharing Center** link.



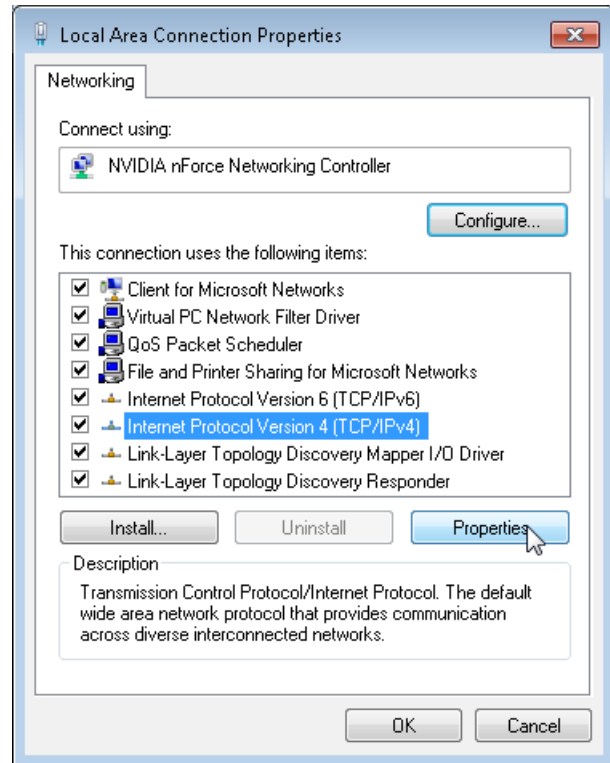
3. From the Network and Sharing Center, select the **Local Area Connection** link.



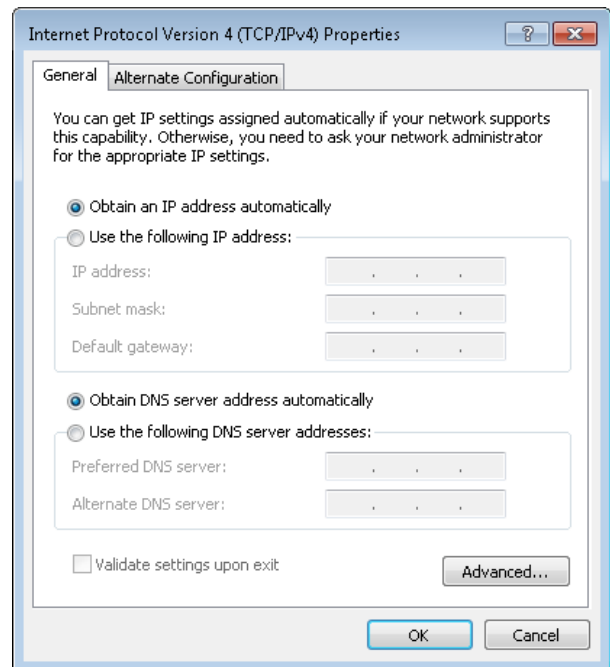
For Additional Help Contact
Trilithic Applications Engineering
1-800-344-2412 or 317-895-3600
support@trilithic.com or
www.trilithic.com

860 DSPi Firmware Upgrade Instructions
P/N 0010275001 – Rev 6/11
5 of 15

4. Select “Internet Protocol Version 4 (TCP/IPv4)”, and then select the **Properties** button.



5. Select the “Obtain an IP address automatically” radio button.
6. Select the **OK** button to save the configuration changes.



For Additional Help Contact
Trilithic Applications Engineering
1-800-344-2412 or 317-895-3600
support@trilithic.com or
www.trilithic.com

860 DSPi Firmware Upgrade Instructions
P/N 0010275001 – Rev 6/11
6 of 15



Configure the 860 DSPi for DHCP Using the External RJ45 Port

1. Go to the **Setup** menu and select the "Setup" icon.
2. Select the "COM/NET" option.
3. Adjust the **Network Port** field so that "External RJ45 Port" selected.
4. Adjust the **My IP Address** field so that "DHCP" is selected. If "DHCP" is not selected, enter "0.0.0.0" in the **My IP Address** field and select the **Ent** button. The **My IP Address** field will default to "DHCP".
5. Go to the **Installer** menu and select the "PING" icon to activate the RJ45 port and obtain an IP address from the router.

COMMUNICATION SETTINGS		
Network Port	External RJ45	10 Mbps
My IP Address	DHCP (Dynamic)	
Subnet Mask	0.0.0.0	
Gateway Address	0.0.0.0	
Pri DNS Address	0.0.0.0	
Sec DNS Address	0.0.0.0	
Activate Network	On Startup	
Com 1 Baud Rate	38400 BAUD	
Com 2 Baud Rate	9600 BAUD	

Press Enter, Up, or Down to Adjust

Ping (Our IP = 10.1.31.47)			
Host Name			
or Host IP	10.1.1.9		
Pkt Delay	10 msec	Pkt Size	0 bytes
Sent		Min Time	
Received		Avg Time	
Lost		Max Time	
LPR		Vt Latency	
LPR (%)		Jitter	

Ping

FAVORITE START STOP MODEM

For Additional Help Contact
Trilithic Applications Engineering
1-800-344-2412 or 317-895-3600
support@trilithic.com or
www.trilithic.com

860 DSPi Firmware Upgrade Instructions
P/N 0010275001 – Rev 6/11
7 of 15



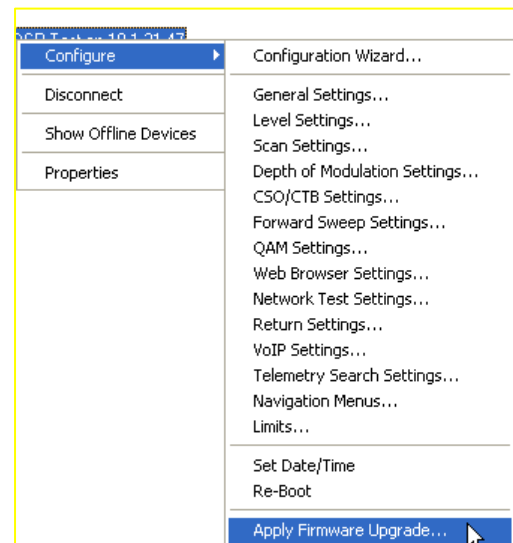
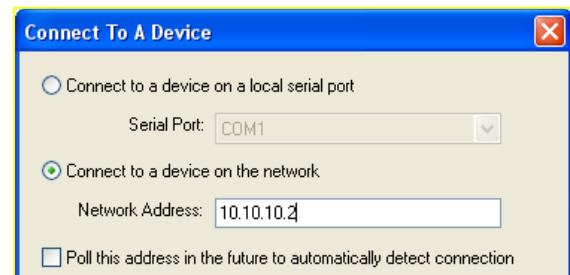
Upgrade Firmware

If you are not using WorkBench, download the 860 DSPi firmware upgrade zip file from the Trilithic website. Then, unzip the file and double-click the executable (.exe) firmware upgrade file. When prompted, enter the IP address of the 860 DSPi and press the **Enter** button.

OR

If you are using WorkBench, perform the following steps:

1. Under the **Online** tab select the “Updates & Upgrades” link, and then select the “Click here to download 860 DSP or 860 DSPi firmware” link. This will download the firmware upgrade (.860) file.
2. Under the **Devices** tab, right-click **860 DSP**, and then select “New 860 DSP Connection...”.
3. Select the “Connect to a device on the network” radio button and enter the IP address of the 860 DSPi.
4. Select the **Connect...** button.
5. Right-click on the device, then hover over the “Configure” menu, and then select “Apply Firmware Upgrade...”.
6. Select the firmware upgrade (.860) file that was saved in Step 1, and then select the **Open** button.



For Additional Help Contact
Trilithic Applications Engineering
1-800-344-2412 or 317-895-3600
support@trilithic.com or
www.trilithic.com

860 DSPi Firmware Upgrade Instructions
P/N 0010275001 – Rev 6/11
8 of 15

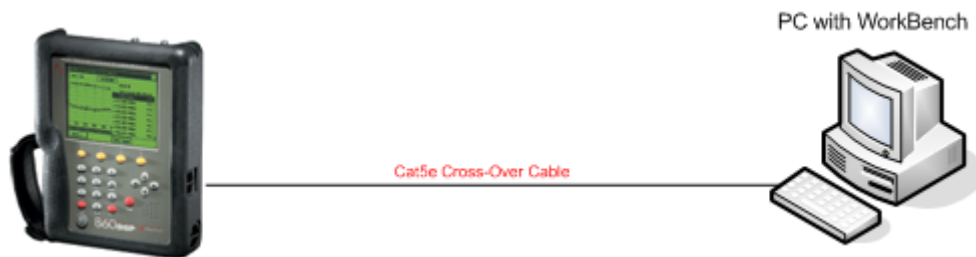
Using a Cross-Over Cable

To use a cross-over cable you will need to assign a static IP address within the same range to both the PC and the 860 DSPi. For this Application Note we will be using the IP address 10.10.10.0 and Subnet Mask 255.255.255.0.

Prerequisites

The following tasks must be completed before performing the firmware upgrade:

- Connect the 860 DSPi to the PC using a Cat5e cross-over cable.
- Connect the 860 DSPi to the charge cube and plug the charge cube into AC power.

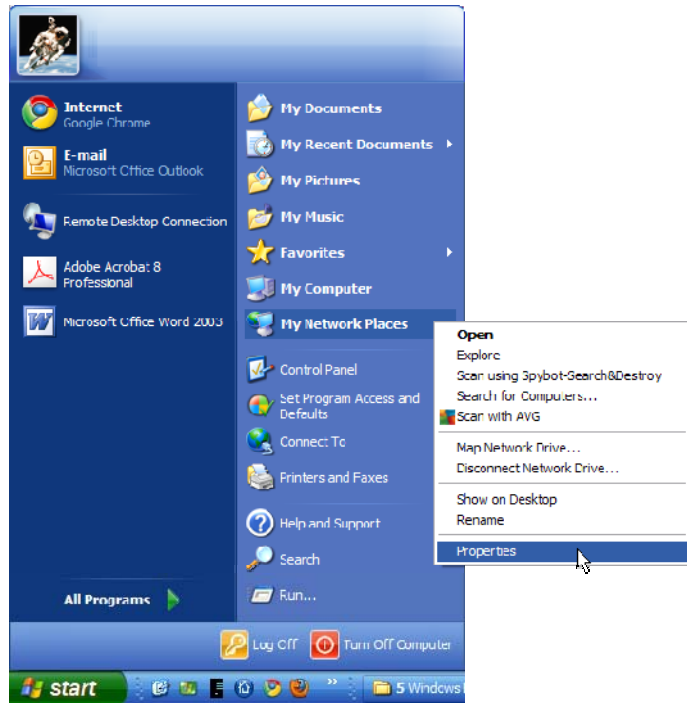


For Additional Help Contact
Trilithic Applications Engineering
1-800-344-2412 or 317-895-3600
support@trilithic.com or
www.trilithic.com

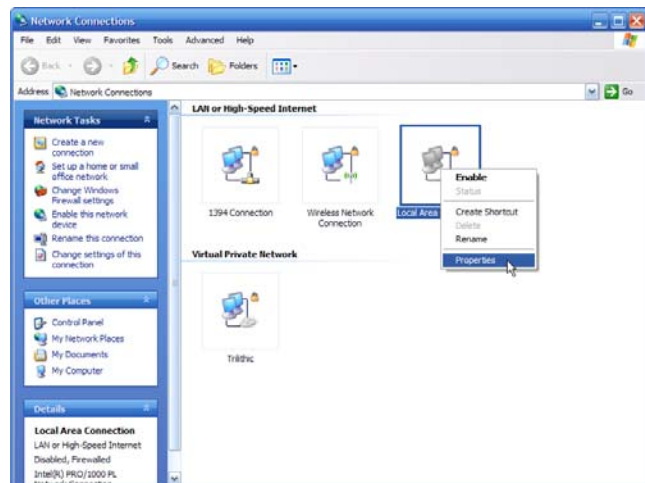
860 DSPi Firmware Upgrade Instructions
P/N 0010275001 – Rev 6/11
9 of 15

Configure the PC to Use a Static IP AddressWindow XP Method

1. Select the **Start** button, then right-click **My Network Places** and then select "Properties".



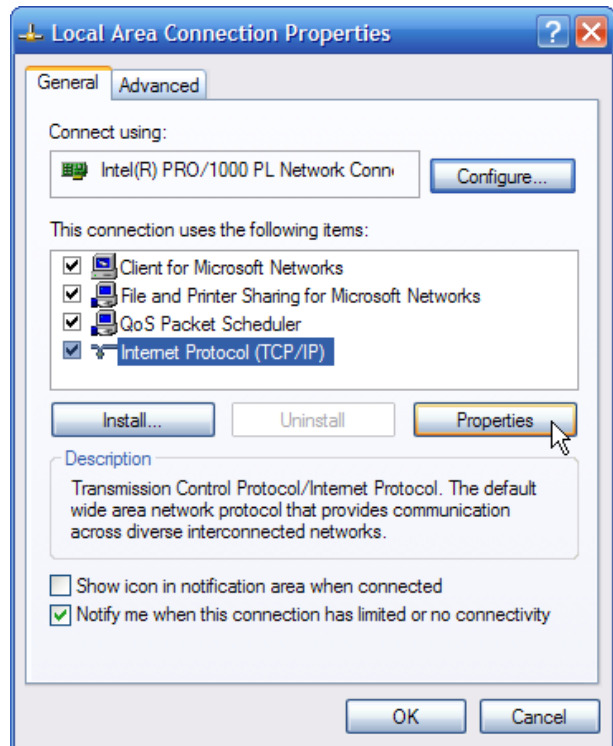
2. Right-click **Local Area Connection** and then select "Properties".



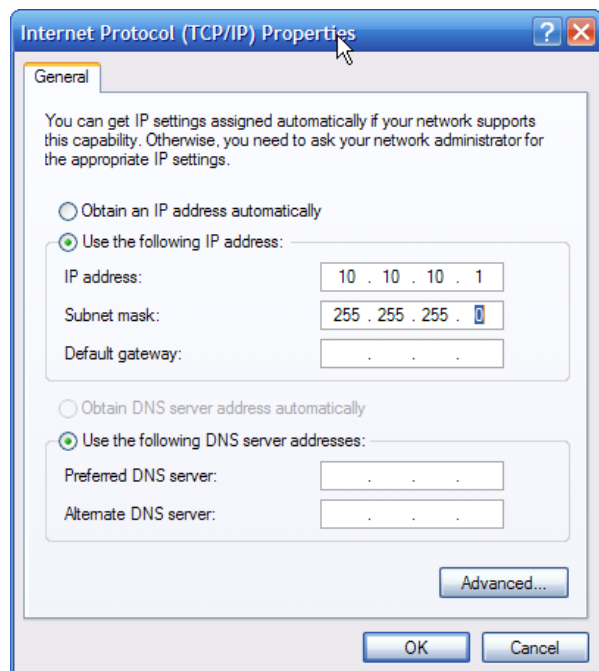
For Additional Help Contact
Trilithic Applications Engineering
1-800-344-2412 or 317-895-3600
support@trilithic.com or
www.trilithic.com

860 DSPi Firmware Upgrade Instructions
P/N 0010275001 – Rev 6/11
10 of 15

3. Select “Internet Protocol (TCP/IP)”, and then select the **Properties** button.



4. Select the “Use the following IP address:” radio button and enter the IP address of 10.10.10.1 and the Subnet Mask of 255.255.255.0.
5. Select the **OK** button to save the configuration changes.

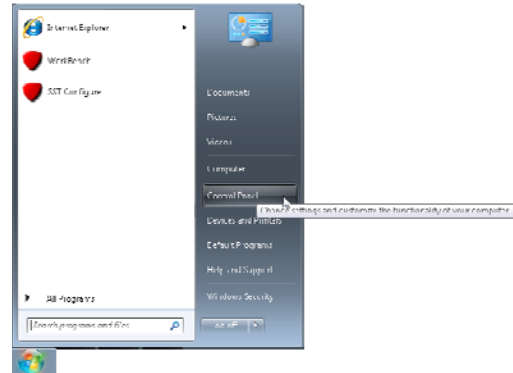


For Additional Help Contact
Trilithic Applications Engineering
1-800-344-2412 or 317-895-3600
support@trilithic.com or
www.trilithic.com

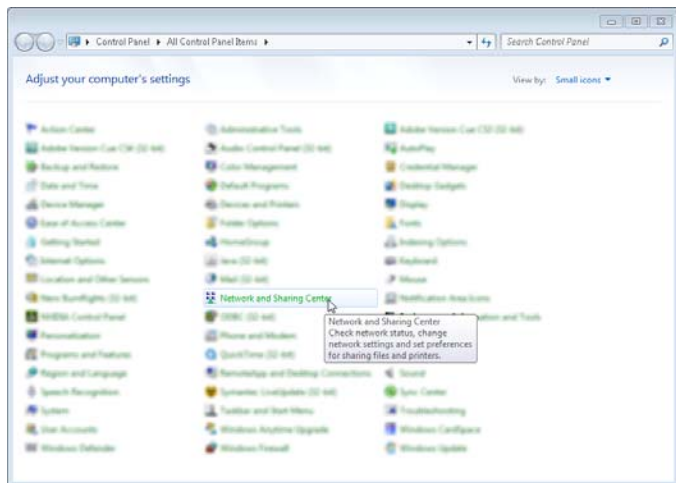
860 DSPi Firmware Upgrade Instructions
P/N 0010275001 – Rev 6/11
11 of 15

Window7 Method

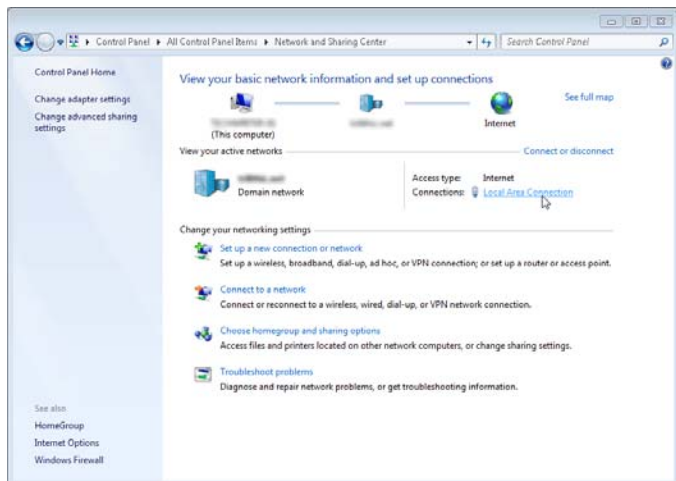
1. Select the **Start** button, then click **Control Panel**.



2. From the Control Panel, select the **Network and Sharing Center** link.



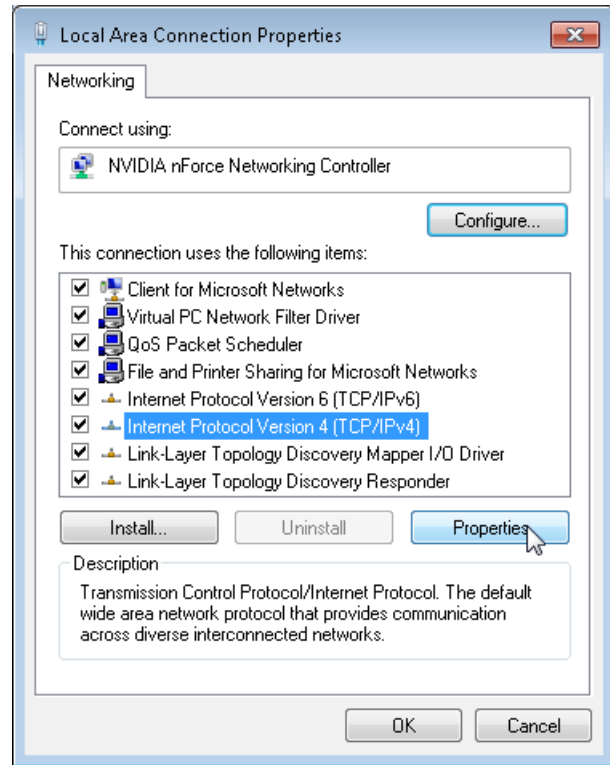
3. From the Network and Sharing Center, select the **Local Area Connection** link.



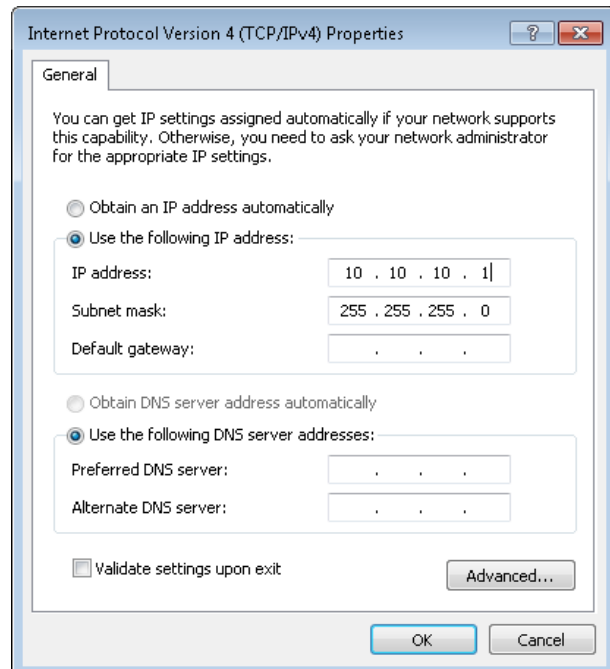
For Additional Help Contact
Trilithic Applications Engineering
1-800-344-2412 or 317-895-3600
support@trilithic.com or
www.trilithic.com

860 DSPi Firmware Upgrade Instructions
P/N 0010275001 – Rev 6/11
12 of 15

4. Select “Internet Protocol Version 4 (TCP/IPv4)”, and then select the **Properties** button.



5. Select the “Use the following IP address:” radio button and enter the IP address of 10.10.10.1 and the Subnet Mask of 255.255.255.0.
6. Select the **OK** button to save the configuration changes.



For Additional Help Contact
Trilithic Applications Engineering
1-800-344-2412 or 317-895-3600
support@trilithic.com or
www.trilithic.com

860 DSPi Firmware Upgrade Instructions
P/N 0010275001 – Rev 6/11
13 of 15



Configure the 860 DSPi for a Static IP Address Using the External RJ45 Port

1. Go to the **Setup** menu and select the "Setup" icon.
2. Select the "COM/NET" option.
3. Adjust the **Network Port** field so that "External RJ45 Port" selected.
4. Enter the IP Address of 10.10.10.2 in the **My IP Address** field.
5. Enter the Subnet Mask of 255.255.255.0 in the **Subnet Mask** field.
6. Go to the **Installer** menu and select the "PING" icon to activate the RJ45 port.

COMMUNICATION SETTINGS		
Network Port	External RJ45	10 Mbps
My IP Address	10.10.10.2	
Subnet Mask	255.255.255.0	
Gateway Address	0.0.0.0	
Pri DNS Address	0.0.0.0	
Sec DNS Address	0.0.0.0	
Activate Network	On Startup	
Com 1 Baud Rate	38400 BAUD	
Com 2 Baud Rate	9600 BAUD	
Press Enter, Up, or Down to Adjust		

For Additional Help Contact
Trilithic Applications Engineering
1-800-344-2412 or 317-895-3600
support@trilithic.com or
www.trilithic.com

860 DSPi Firmware Upgrade Instructions
P/N 0010275001 – Rev 6/11
14 of 15



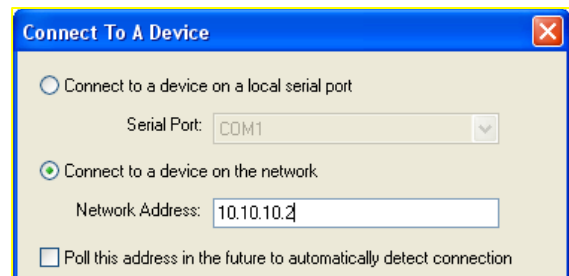
Upgrade Firmware

If you are not using WorkBench, download the 860 DSPi firmware upgrade zip file from the Trilithic website. Then, unzip the file and double-click the executable (.exe) firmware upgrade file. When prompted, enter the IP address of the 860 DSPi and press the **Enter** button.

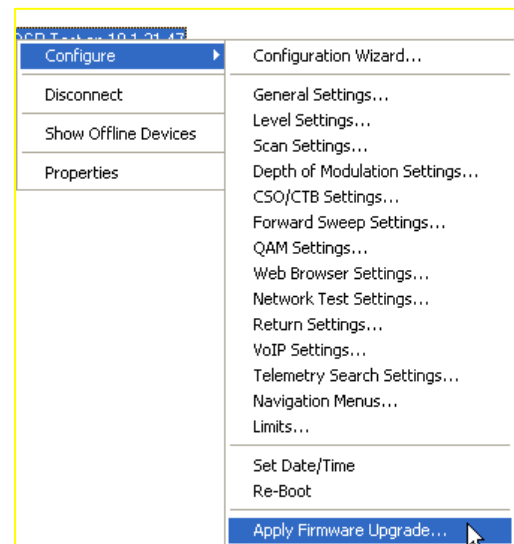
OR

If you are using WorkBench, perform the following steps:

1. Under the **Online** tab select the “Updates & Upgrades” link, and then select the “Click here to download 860 DSP or 860 DSPi firmware” link. This will download the firmware upgrade (.860) file.
2. Under the **Devices** tab, right-click **860 DSP**, and then select “New 860 DSP Connection...”.
3. Select the “Connect to a device on the network” radio button and enter the IP address of the 860 DSPi.
4. Select the **Connect...** button.



5. Right-click on the device, then hover over the “Configure” menu, and then select “Apply Firmware Upgrade...”.
6. Select the firmware upgrade (.860) file that was saved in Step 1, and then select the **Open** button.



For Additional Help Contact
Trilithic Applications Engineering
1-800-344-2412 or 317-895-3600
support@trilithic.com or
www.trilithic.com

860 DSPi Firmware Upgrade Instructions
P/N 0010275001 – Rev 6/11
15 of 15